

FRIENDS OF STONEHURST

Robert Treat Paine Historical Trust, 100 Robert Treat Paine Drive, Waltham, MA

vol. 7, no. 2, Fall 2006

History Unearthed During Construction Project at Stonehurst



Construction crews uncovered massive boulders on the grounds of Stonehurst while installing a new water main. Photo by Ann Clifford.

Trust Awarded \$52K Grant

The Robert Treat Paine Historical Trust was awarded a \$52,000 federal grant from the Institute for Museum and Library Services to strengthen connections to Stonehurst visitors through exhibits and interpretive signage. In the project, staff will work with consultants to create a visual identity for Stonehurst, design interior exhibits, and develop and implement a landscape interpretation and signage plan.

The project will enhance the casual visit to the museum and its park-like estate, convert casual visitors to museum visitors and improve the museum experience. The site's interpretive message will inspire thousands of annual visitors to think about the power of place and about the historical, natural and cultural resources that enhance the community.

Stonehurst is grateful to the Institute of Museum and Library Services for helping fund this exciting project. IMLS is an independent federal agency that grows and sustains a "Nation of Learners" because life-long learning is essential to success. The IMLS Museums for America grants strengthen a museum's ability to serve the public more effectively by supporting high-priority activities that advance the institution's mission and strategic goals.

Stonehurst architect Henry Hobson Richardson "reveled in constructive rudeness. His greatest delight was to go upon the site for some country residence and dig up all the materials on the spot, to erect the house."¹

When Richardson visited the Paines' modest summer house in October 1883 to discuss their desire for an addition, he must have been ecstatic. The old stone walls that cut across the hillside site in Waltham would provide an ample and expressive building material for an ideal country house. Using local oxen, the Paines' gardener Walter Clark spent months in the summer of 1885 hauling glacially sculpted boulders for the new house and its approach drive.

120 years later, in a construction project that took place in the summer of 2006, contractors encountered boulders even more massive than those used in the construction of the house. Gravity Construction, an appropriately named contractor, was hired by the City of Waltham to install a new water main up the drive to the house. Their equipment lifted a boulder the size of a small elephant from within a few feet of Stonehurst.

The old system of water pipes, probably dating to 1886, had reached its useful lifetime and the fire hydrant servicing the house had been reduced to a trickle. The new water main not only provides adequate pressure to the hydrant, but also increases the capacity of the system for sprinklers.

As an added benefit of the project, the pot-hole-ridden approach drive will receive a fresh, smooth surface.

¹ P.B. Wight, "H.H. Richardson," *The Inland Architect and Builder*, May 1886.

The Friends of Stonehurst is launching a new effort to broaden member participation. The first step in this project is to survey current membership.

Please take a few minutes to complete the enclosed survey and return it for two free passes to an upcoming tour or program. Thank you!

Visitors from Across U.S. Celebrate Waltham History at Stonehurst

More than 70 visitors from Waltham and beyond participated in Historic Waltham Days events at Stonehurst on Thursday, September 21, making the day a resounding success!

Stonehurst hosted at least 50 visitors during our Open House, with some from as far away as Utah and Japan. While many visitors were Waltham residents, others came from neighboring communities, the National Archives, Watertown Historical Society and a group of students from Chapel Hill-Chauncey Hall School. Two Friends of Stonehurst volunteers, Biz Paynter and Waltham resident Kathy Griffin, donated most of their afternoon to greeting visitors, assisting with tours and answering questions.

Later that afternoon, more than 30 people participated in a walking tour led by landscape historian Mary Gregory. Co-sponsored by Historic New England, the tour explored the combined 167 acres of the Paine and Lyman Estates, focusing on the changing landscape of the two historic estates. The tour, *From Town Center to Country Retreat*, was based on research conducted by Mary Gregory that will enhance our daily interpretation of Stonehurst and the grounds.

The Friends of Stonehurst would like to thank the organizers of Historic Waltham Days; our co-sponsors, Historic New England and the City of Waltham; landscape historian Mary Gregory; Lyman Estate site manager Sharron Kenney; volunteers Biz Paynter and Kathy Griffin; and everyone who came out to Stonehurst for the events.



Landscape historian Mary Gregory (second row from bottom, on left) led a walking tour of the grounds of the Paine and Lyman Estates as part of Historic Waltham Days in September. Photo courtesy Historic New England.

Did you see the illustrated article on Stonehurst in the September 2006 issue of *Antiques Journal*? In "Stonehurst: Modernist in Concept with Arts & Crafts Detail," author Randall Decoteau described how "entering the [Great] Hall for the first time literally takes your breath away."

Friends Welcome New Employee

This summer the Friends of Stonehurst welcomed a new Education and Outreach Director to the staff: Heather Cole. Heather joins Curator/Director Ann Clifford and is responsible for public programs, tours, school groups, outreach and marketing efforts for the estate.

Heather recently completed her MA in history and previously worked in the public affairs office at Bentley College and on history education grants in Salem. She lives in Norwood, Mass. where she produces a local history program for the public access television station and serves on the board of the Norwood Historical Society.

Heather will be coordinating the Friends of Stonehurst volunteers and invites anyone interested in helping out with programs, tours or educational activities to call 781-314-3293 or email info@stonehurstwaltham.org. Heather is at Stonehurst most Wednesdays to Fridays.

The Friends of Stonehurst were sad to bid farewell to former Education Director Jenn Meader whose family relocated to New Jersey this summer. We wish her all the best.

The Friends of Stonehurst would like to thank the following organizations for their generous support of the preservation and interpretation of the estate:



INSTITUTE of MUSEUM
and LIBRARY SERVICES



Friends of Stonehurst Public Programs, Fall & Winter 2006

Frederick Law Olmsted & The Massachusetts Legacy

Thursday, November 2

7:00 p.m.

\$7 adults, \$6 seniors & students, \$4 Friends of Stonehurst

Learn more about the ideas and legacy of one of Stonehurst's designers at our fall lecture on *Frederick Law Olmsted & The Massachusetts Legacy* to be given by Alan Banks, supervisory park ranger at the F.L. Olmsted National Historic Site.

The firm Frederick Law Olmsted founded more than a century ago was involved in over 1,200 landscape architecture projects throughout Massachusetts, ranging from expansive 500-acre public parks to intimate private gardens. One of its greatest achievements is a six-mile "emerald necklace" of ponds, parks, and parkways that winds its way through Boston. The one-hour slide lecture will sample this rich landscape legacy and explore the ideas that shaped some of the most treasured lands in Massachusetts.



Stonehurst Fall Clean-Up

Sunday, November 5

12:00-3:00 p.m.

FREE

As part of the Waltham Land Trust Stewardship Day, we invite volunteers to join us in preserving the historic grounds of Stonehurst for the enjoyment of all. We'll be picking up trash, removing invasive species and enjoying an afternoon in the fresh air and beautiful landscape. Please register so we will know how many participants to plan for. To register or for more information, contact the Waltham Land Trust at 781-893-3355, and specify your interest in volunteering at Stonehurst.



Historic House Tours

Thursdays & Fridays & first Wednesday of the month

1:00 p.m., 2:00 p.m., 3:00 p.m.

\$7 adults, \$6 seniors, \$4 students, free Friends of Stonehurst

Stonehurst is open for tours through the fall and winter on Thursday and Friday afternoons, and on the first Wednesday of each month, at 1:00, 2:00 and 3:00 p.m. We added our Wednesday afternoon hours to coincide with new tours of the Lyman Estate greenhouses now offered by our neighbor, Historic New England. The 109 acres of conservation land and walking trails surrounding the Paine Estate are open to the public year-round.

Holiday Open House

Sunday, December 3

11:00 a.m.-3:00 p.m.

FREE

Join us for our Annual Holiday Open House at Stonehurst with seasonal decorations, refreshments and activities for the whole family. We're still planning the fun, so check our website or watch for a flyer in the mail in November. Interested in helping out? Call Heather at (781) 314-3293.



All programs are held at Stonehurst, 100 Robert Treat Paine Drive, Waltham and are offered by The Friends of Stonehurst and the City of Waltham, Jeannette A. McCarthy, Mayor. Advance registration required only where noted. The first floor of Stonehurst is wheelchair accessible and there is ample on-site parking. For directions, call (781) 314-3290 or visit our website at: www.stonehurstwaltham.org.

Become a Friend of Stonehurst

MEMBERSHIP CATEGORIES

Individual	<input type="checkbox"/> \$30
Family	<input type="checkbox"/> \$50
Sustaining	<input type="checkbox"/> \$100
Supporting	<input type="checkbox"/> \$250
Patron	<input type="checkbox"/> \$500
Benefactor	<input type="checkbox"/> \$1000

Total amount enclosed: _____

Prefix: Mr. Ms. Mrs. Mr. & Mrs.

Name: _____

Address: _____

Email: _____

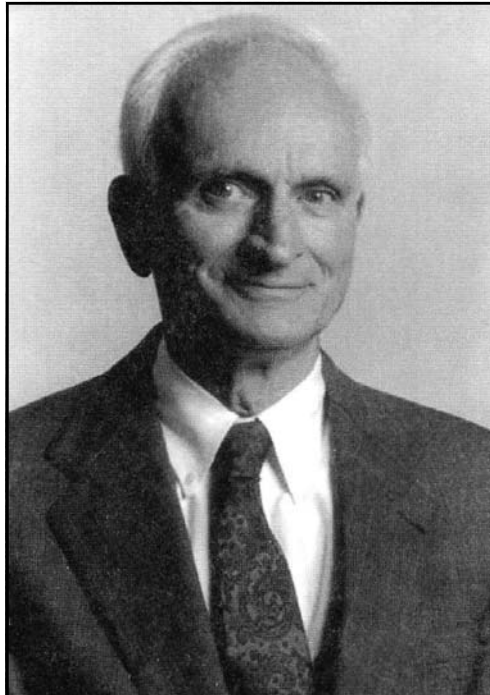
I may be interested in volunteering at Stonehurst.

Please make your check out to Friends of Stonehurst and mail to:

Friends of Stonehurst
100 Robert Treat Paine Drive
Waltham, Massachusetts 02452

All contributions are deductible to the fullest extent of the law.

Former Trustee Robert Treat Paine Storer, Jr. Dies at Age 83



Robert Treat Paine Storer, Jr., former trustee of the RTP Historical Trust, passed away in September.

Trustee and long-time supporter of the Friends of Stonehurst, Robert Treat Paine Storer, Jr. passed away on September 22 at the age of 83 years.

Bob Storer, as he was known to friends, was founding president of the non-profit Robert Treat Paine Historical Trust, created in 1991 to provide guidance and support to the City of Waltham, owner of Stonehurst.

Tom Paine, current president of the Robert Treat Paine Historical Trust, expressed the Trust's gratitude to Bob Storer for his devotion to Stonehurst over the years.

"Bob was tireless in his service to this cause, a charming and passionate leader of the board, and a generous benefactor," Tom Paine said. "He had gifts that would have made his great grandfather and namesake proud. It was a pleasure to work with him."

Bob Storer was the 11th generation of his family to attend Harvard University and he worked at John Hancock in Boston for many years. He was also a trustee of the Massachusetts Eye and Ear Infirmary and chairman of the New England Eye Bank. He leaves behind a wife, son, three daughters, two sisters and three grandchildren.

Friends of Stonehurst

c/o Robert Treat Paine Historical Trust
100 Robert Treat Paine Drive
Waltham, MA 02452
(781) 314-3290
www.stonehurstwaltham.org

The Friends of Stonehurst Newsletter is published semi-annually by the Robert Treat Paine Historical Trust. We welcome your comments or suggestions.
Editors: Ann Clifford, Heather Cole

Trustees of the Robert Treat Paine Historical Trust

President: Thomas M. Paine, MLA
Vice President: Robert Treat Paine Storer, III
Treasurer: Richard H. Willis
Secretary: Susan Lyon
Judith Keegan DiMarzo
Allan S. Galper
Brian LaBau, AIA
Monique B. Lehner
Edith H. Overly
Elizabeth Storer Paynter
James V. Righter, FAIA
Elaine P. Smerlas
Mary Webb
Carl Zinnell

(781) 314-3290 · fax (781) 894-8684 ·
info@stonehurstwaltham.org



Stonehurst is open for tours on Thursdays, Fridays and the first Wednesday of the month at 1:00, 2:00 and 3:00 p.m., and by appointment.