



Friends of
STONEHURST
THE ROBERT TREAT PAINE ESTATE



*Protecting
Waltham's land
...forever.*

Waltham Land Trust
240 Beaver St.
Waltham, MA 02452
Board of Directors

Nadene Stein, PhD, *President*
Maureen Bagge Fowler,
Vice President
David Kehs, *Clerk*
Marc Rudnick, *Treasurer*
Martha Creedon
Marie Daly
George Darcy III
John Dieckmann
Natalie Hayes
Brian McCormick
Daniel Melnechuk
Phil Moser
Anna Richardson
Stephen Rourke
Jim Walker
Diana Young

Sonja Wadman,
Executive Director

**Friends of Stonehurst/
Robert Treat Paine Historical
Trust**
100 Robert Treat Paine Dr.
Waltham, MA 02452
Board of Directors

Robert Treat Paine Storer III,
President
Thomas M. Paine,
Vice President
Susan Lyon,
Secretary
Norman G. Adams, AIA
Erika Bourne
John Cox, PhD
Judith Keegan DiMarzo
Maureen Bagge Fowler
Brian LaBau, AIA
Sarah Lyon
Elizabeth Storer Paynter
Elaine P. Smerlas

April 9, 2018

Dear Mayor, City Council, School Committee & School Building Committee,

Attached please find letters, articles and a petition representing thousands of individuals and organizations throughout the region and country who oppose the plan to develop any piece of Stonehurst, the Robert Treat Paine Estate/Storer Conservation Lands and Chesterbrook Woods for a school campus. The material draws from a broad range of perspectives presenting a myriad of legal, philosophical, practical and ethical arguments against the evisceration of this protected land.

We trust that this strong expression of public concern and disapproval will convince you to discard this ill-considered and unviable proposal and to pursue instead other less destructive alternatives for the school and its campus.

Sincerely,

Friends of Stonehurst Board of Directors and Waltham Land Trust Board of Directors

[Waltham Land Trust board members George Darcy III, who is also a member of the Waltham City Council, board member Philip Moser, who is also a member of the Waltham Conservation Commission, board member Marie Daly, who is also a member of the Waltham Historical Commission, and board member President Dr. Nadene Stein, who is also a member of the Waltham School Building Committee, did not participate in the WLT discussion and vote on this matter.]

[Friends of Stonehurst/Robert Treat Paine Historical Trust board member Dr. John Cox, who is also a member of the Waltham Historical Commission, did not participate in the Friends of Stonehurst discussion and vote on this matter.]

- cc. Senator Michael J. Barrett
- Representative Thomas M. Stanley
- Representative John J. Lawn
- Brona Simon, State Historic Preservation Officer and Executive Director, Massachusetts Historical Commission
- Robert O'Connor, Forest & Land Policy Director, Executive Office of Energy & Environmental Affairs
- Mort Isaacson, Chair, Waltham Historical Commission
- William Doyle, Chair, Waltham Conservation Commission



STONEHURST

THE ROBERT TREAT PAINE ESTATE

FRIENDS OF
STONEHURST/

ROBERT TREAT PAINE
HISTORICAL TRUST

BOARD OF TRUSTEES

President

Robert Treat Paine Storer, III

Vice President

Thomas M. Paine, MLA

Secretary

Susan Lyon

Directors

Norman G. Adams, AIA

Erika Bourne

John Cox, PhD

Judith Keegan DiMarzo

Maureen Bagge Fowler

Brian LaBau, AIA

Sarah Lyon

Elizabeth Storer Paynter

Elaine P. Smerlas

March 21, 2018

Dear Mayor and Members of the City Council and School Committee,

We appreciate your dilemma in locating a new high school building and campus but are strongly opposed to any plan to take acreage away from Stonehurst, the Robert Treat Paine Estate/Storer Conservation Lands or the Chesterbrook Woods parcel. We recognize your need for expansion, realize it is a difficult process and fully support your academic program. However, we contend that a decision to pursue protected lands and break a public promise would be a profound disservice to the people who live in Waltham today and generations into the future.

In addition to being a valuable environmental asset, the Paine Estate is an exceptionally important cultural landscape associated with Frederick Law Olmsted, a giant in America's historical, artistic and social history with worldwide fame and influence. Its H.H. Richardson-designed architectural masterwork is a popular event venue, small branch library, museum and National Historic Landmark.

The Massachusetts School Building Authority (MSBA) funding agency recognizes the immeasurable educational value of resources like the Paine Estate, stating that "to the extent feasible, the site selected [for a school] shall be proximate to other facilities such as libraries, museums, parks, natural resources, nature study areas, and businesses which would *enhance* the proposed educational program." [emphasis added] It insists that the site selected for a new school shall "minimize any possible adverse educational, environmental, social or economic impact upon the community." Destroying essential community assets to build a new school or school campus runs contrary to the MSBA's educational and school-building goals.

The entire 109-acre Paine/Storer property is protected by National Historic Landmark status and conservation restrictions. It was donated for the public good with restrictions to ensure that the land be maintained "in a predominantly natural, scenic, green and open condition forever." According to the Massachusetts Land Trust Coalition, the 25.5-acre Chesterbrook Woods that was historically a part of the estate is in all

probability protected by the recently strengthened protections of Article 97 in the Massachusetts Constitution.

As you know, the local, state and federal process to reverse promised protections on public land is "purposefully onerous." Even if Waltham were willing to attempt to unravel multiple historical and environmental protections, jeopardizing resources across the community and beyond, the MSBA is unlikely to fund such a destructive act.

Olmsted thought in terms of centuries, not years or decades. He recognized how wilderness is central to the American identity and had the foresight to protect our natural wonders and draw inspiration from "genius of place." His contributions to the American landscape range from our country's first national and state reservations at Yosemite Valley and Niagara to urban public parks in New York City, Chicago, Boston, DC and Montreal to the Cradle of American Forestry National Historic Site. Along with this impressive portfolio that includes the Paine Estate, his philosophy that national and city parks are social institutions essential to democracy has helped shape the very fabric of America. Olmsted's concept of national parks has spread to over 100 nations.

The Paine Estate is Waltham's Olmsted park, a place where he helped develop distinctly American organic design imagery and began his influential experiments in forestry. The woodlands of the Paine Estate are an integral part of the whole, providing meaning, nourishment and exercise to thousands of residents and other visitors each year, fulfilling Olmsted's dream for America.

The City of Waltham is so fortunate to be the steward of this extraordinary place that enhances its community by providing valuable educational opportunities and acres of unspoiled open space enjoyed and cherished by residents of all ages. We urge you to take into consideration the points we have made here and pursue other land within Waltham to build the new high school campus.

Sincerely,

The Friends of Stonehurst/Robert Treat Paine Historical Trust Board of Directors

[Friends of Stonehurst/Robert Treat Paine Historical Trust board member Dr. John Cox, who is also a member of the Waltham Historical Commission, did not participate in the Friends of Stonehurst discussion and vote on this matter.]

cc. Senator Michael J. Barrett
Representative Thomas M. Stanley
Representative John J. Lawn

WALTHAM



Waltham Land Trust, Inc.
P.O. Box 541120
Waltham, MA 02454-1120
www.walthamlandtrust.org
781-893-3355

A non-profit organization dedicated to preserving our community's natural resources through open space advocacy, education, acquisition, and protection.

Board of Directors

Nadene Stein, PhD, *President*
Maureen Bagge Fowler, *Vice-President*
David Kehs, *Clerk*
Marc Rudnick, *Treasurer*
Martha Creedon
Marie Daly
George Darcy, III
John Dieckmann
Natalie Hayes
Brian McCormick
Daniel Melnechuk
Phil Moser
Anna Richardson
Stephen Rourke
Jim Walker
Diana Young

Advisory Board

Kate Buttolph
Dr. Laura Goldin
Dr. Eric Olson
Michael Squillante
Mike Tabaczynski
Douglas Waybright
Roger Wrubel

Executive Director

Sonja Wadman

**Protecting
Waltham's land
...forever.**

March 30, 2018

To Whom It May Concern:

On January 30, 2018, Waltham Mayor Jeannette McCarthy, in her role as chair of the School Committee, announced a plan to re-purpose approximately 13 acres of the Storer Conservation Lands and to use that land as part of the site for a new high school campus. This plan was described as a "backup plan", which would be pursued only if the preferred high school building site (the Stigmatine land) cannot be acquired by the City. On February 7, 2018 the School Committee voted unanimously that the "plan B" choice for the location of the new high school should be the current high school site, as "augmented" with additional acreage from the adjacent conservation land.

The Waltham Land Trust firmly opposes this proposal. As an organization, we are dedicated to preserving Waltham's precious open spaces. Open space should not be sacrificed for development, whether it be commercial, residential, or municipal. This is particularly true for those lands that have been explicitly set aside for conservation purposes, such as the Storer Conservation Lands.

The specific land involved in the School Committee's proposal can be found in the City's Geographic Information System (GIS) map as "0 Off-Chesterbrook Rd", parcel R042_007_0001. This parcel was acquired by the City in 1974, as part of the acquisition of the Paine Estate. After negotiating terms with the owners, who were heirs of Robert Treat Paine, the city executed a "friendly" eminent domain taking, which is recorded at the Middlesex County Registry of Deeds in Book 12629, Page 286. The taking order reads, in part,

WHEREAS: In the judgment of the City Council the public necessity and convenience require that the following hereinafter described property be taken by eminent domain for conservation purposes it is ORDERED...

The taking order was followed by a confirmatory deed, recorded in Book 12720, Page 255. The deed specifies restrictions on how the land can be used, stating in part,

The foregoing restrictions are authorized by the General Laws, Chapter 184, sections 31-33 for the purpose of maintaining said parcel predominantly in a naturally scenic, green and open condition forever in order to protect the natural and watershed resources of said City. The restriction shall be administered by the Conservation Commission of said City...

While most of the Storer Conservation Land was donated to the City by Theodore "Ted" Storer, this parcel was purchased, since it was owned jointly by Ted Storer and other relatives. The purchase price was \$52,758.00. The funds needed to cover this parcel plus several other small parcels in the Storer Conservation Land were obtained from a federal grant from the Land and Water Conservation Fund.

Clearly, when this land was acquired, the intention of the City officials, as well as the descendants of Robert Treat Paine, was that this land should be preserved in its natural state forever. Since 1974, the City and its Conservation Commission, along with private

groups like the Friends of Stonehurst [the Robert Treat Paine Historical Trust] and the Waltham Land Trust have worked to maintain the original objectives of the City and the Paine family. It is unconscionable to even consider removing this land from its protected status.

In the discussion of this plan at the January 30, 2018 joint meeting of the School Committee and the City Council, it was observed that neighbors and abutters had raised significant objections to several other potential high school building sites. The 13-acre R042_007_0001 parcel has no abutting property owners other than the City of Waltham. This fact has led some to conclude that no one will raise objections if this parcel is re-purposed for educational use. But this parcel has a much larger constituency. Any attempt to “undo” all of the restrictions that have been applied to this land will have an impact throughout the City and beyond.

We of the Waltham Land Trust urge the Mayor, the City Council, and the School Committee to reject the idea of using Waltham’s most-protected open space for anything other than conservation purposes.

[Board member George Darcy III, who is also a member of the Waltham City Council, board member Philip Moser, who is also a member of the Waltham Conservation Commission, board member Marie Daly, who is also a member of the Waltham Historical Commission, and board President Dr. Nadene Stein, who is also a member of the Waltham School Building Committee, did not participate in the WLT discussion and vote on this matter.]



The Trustees of Reservations
200 High Street | Boston, MA 02110

April 6, 2018

Mr. Robert Treat Paine Storer III, President
Thomas M. Paine, Vice President
Friends of Stonehurst
100 Robert Treat Paine Drive
Waltham, MA 02452

Dear Mr. Storer and Mr. Paine,

It is with great consternation that I write to you concerning the future of Stonehurst. The 109-acre estate property and the 25.5-acre Chesterbrook Woods parcel represent a critical preservation and land conservation area at the core of the former 400-acre Paine Estate, and its progenitor, the Vale. These two parcels should not be considered as two separate tax lots, but instead considered as a continuous whole, which is compromised by the loss of any single acre.

When the design of the estate was conceived in 1866, it continued a long tradition of country estate design started in 1793 with The Vale, the Theodore Lyman Estate. As Lyman's children and grandchildren inherited portions of their family land, they built upon the legacy of their forefather. As such, these critical 134.5 acres are the scion of The Vale's English Landscape traditions, sculpted by a landscape master and dedicated descendants into another generation of field, forest and pleasure ground. As the ultimate gift for the citizens of Waltham, precious dollars purchased these critical acres 1974 and 2001, entrusting the City to continue the Lyman-Paine legacy of landscape management.

Robert Treat Paine's estate, begun in 1884 with advice from leading landscape architect Frederick Law Olmsted, was a compilation of creative landscape genius built upon the combined legacy of the Vale and Olmsted's recent country seat work at Moraine Farm (1880) for the Phillips family. At Stonehurst, the latest advances in farming and forestry were combined with a landscape of leisure, each element meant to complement, and not dominate, the estate design. At the time, the Vale was considered one of the earliest, great landscapes of the Boston area. When Charles Eliot visited the Vale in 1889, just as Stonehurst emerged as its own country seat, Eliot wrote, "Many photographs... could only partially illustrate the beauty and variety of the larger scenery of the estate...Here is abundant proof that if Nature is helped and not forced, she will make for us scenery which shall grow to more and more loveliness and character as the years pass."

Stonehurst was clearly designed in this same fashion. From the siting of the house, to the subtle manipulation of topography, to lessons in forestry management and viewshed design, Olmsted (and Eliot) advised the Paine family, polishing former farm fields and woodlots into a secluded, nature-enhanced country seat. For this reason, the woodlands and natural areas became as important to the


cultural landscape as the house terrace and gardens. Offering shelter, seclusion and private wilderness, trails through these natural areas offered ever-changing passages of scenery that became more and more precious to life in a quickly urbanizing City of Waltham, and, remarkably, survived throughout the twentieth century.

The family's transfer of the 109-acre property to the City of Waltham in 1974 was intended for recreational and conservation purpose, further recognition that its woodlands, meadows and wild lands were as important to the site experience as the designed lawns and gardens closer to the house. When the Chesterbrook Woods parcel was reunited with the Paine Estate in 2001, it furthered these same ideals, to preserve the scenic woodlands, wetlands and wildlands as an extension of the National Landmark.

These acres are investments that cannot be separated, bartered or traded. They are as inseparable from their historic design intent and their conservation habitat as each generation of the Lyman-Paine family is tied to each other. Each acre is a link in a common chain of preservation, conservation and scenery where Nature is helped, not forced. To build a new high school on the Chesterbrook Woods parcel would infinitely mar the integrity of this Landmark estate and its precious cultural and natural legacy.

With you, I urge the City of Waltham to consider other alternatives for the high school, and to protect and preserve these acres of heritage landscape for generations to come.

Ardently,

A handwritten signature in cursive script that reads "Lucinda A. Brockway".

Lucinda (Cindy) Brockway

Program Director for Cultural Resources

The Trustees



Massachusetts Land Trust Coalition, Inc.
18 Wolbach Road, Sudbury, MA 01776
978.443.2233 - fax: 978.443.2333
email: Info@MassLand.org

2018 – 2019
BOARD OF
TRUSTEES

William G Constable,
President
Lincoln Land Trust

Karen Grey,
Vice President
Wildlands Trust

Loring Schwarz,
Vice President
NewPrimavera Consulting

Rita Grossman, Clerk
Boxborough Conservation
Trust

John Page, Treasurer
Arlington Land Trust

Ed Becker
Essex County Greenbelt

Whit Beals
New England Forestry
Foundation

Jocelyn Forbush
The Trustees

Cynthia Henshaw
East Quabbin Land Trust

Rich Hubbard
Franklin Land Trust

Andrew Magee
Acton Conservation Trust

Kathleen O'Donnell
Cohasset Land Foundation

Mark Robinson
The Compact of Cape Cod
Conservation Trusts

Bob Wilber
Mass Audubon

Henry Woolsey
Petersham Open Space
Committee

STEERING COMMITTEE
OFFICERS

Kathy Orlando, Chair
Sheffield Land Trust

Lisa Vermegeard, Vice Chair
Sudbury Valley Trustees

STAFF

Kathy McGrath
Coordinator

Kara Campbell
Outreach Coordinator

February 28, 2018

Re: Paine Estate/Chesterbrook Woods, Waltham

To Whom It May Concern:

We understand that the City of Waltham is considering the conversion of a 13 acre section of the Paine Estate for the construction of a new school. The disposition of the land for this purpose not only violates the provisions of Article 97 of the Massachusetts Constitution but the restrictions and covenants contained in the Deed to the City of Waltham.

The Massachusetts Land Trust Coalition (MLTC) is a non-profit organization that represents the interest of over 120 land conservation trusts in the Commonwealth. Over the past 150 years, these land trusts have protected thousands of acres for public benefit, often in partnership with state and local government. Land trusts have been pioneers in developing state-of-the-art legal tools to safeguard our natural resources. MLTC has an interest in making sure that lands acquired for open space are protected from proposals that conflict with these purposes.

Under Article 97, land taken or acquired for the “conservation, development and utilization of the agricultural, mineral, forest, water, air and other natural resources” shall not be used for other purposes or “otherwise disposed of” without the two thirds vote of the legislature.

The Paine Estate was conveyed to the City of Waltham by a deed of gift from Theodore L. Storer and Roscoe W. Brooks, Trustee dated October 15, 1974 and recorded with Middlesex South District Registry of Deeds in Book 12720, Page 280 and confirmed by an Order of Taking recorded in Book 12629, Page 286. This Deed contains certain restrictions and protections that are recited in the Acceptance of Deed executed by the then Mayor of Waltham and recorded in Book 12720, Page 273. These restrictions, by their terms, are effective until the year 2100 and, as stated in the Acceptance signed by the Mayor, are deemed to be authorized by G.L. c. 184 Sections 31-33 as perpetual. As a result of these recordings, the Paine Estate is not only protected under Article 97 but by a separate restriction that may only be released by a cy pres petition that will involve the Supreme Judicial Court and the Attorney General.

We understand that the School Committee is also interested in an abutting parcel known as Chesterbrook Woods, acquired by Order of Taking and by Confirmatory Quitclaim Deed dated June 26, 2001 recorded in Book 33134, Page 54. While this parcel was taken for “all public purposes and municipal purposes”, the City’s acquisition was done at the urging of the Open Space Committee. The land appears on Open Space and Recreation Plans. Trails have been constructed connecting it to the protected Paine Estate and the entire combined acreage is described as Robert Treat Paine/Storer Conservation Land. We understand that a conservation restriction has been proposed several times to protect the Chesterbrook Woods but one has never been recorded.

The fact that an actual restriction has not been placed on Chesterbrook Woods does not defeat the claim that Article 97 protects this parcel as well. As the Supreme Judicial Court has stated in Smith v. City of Westfield (478 Mass. 49 (2017)), “there are circumstances where municipal parkland may be protected by art.97 without any such recorded restriction, provided the land has been dedicated as a public park”. Given the circumstances surrounding the acquisition of this land, its treatment as protected open space by several generations of City officials and committees, we support the contention that Chesterbrook Woods also has the benefits of the protections of Article 97.

MLTC is well aware of the oft competing interests of open space protection and a school committee’s desire for pristine land in a crowded municipality. However, it is the ultimate irony to spend taxpayer money to destroy a historic landscape purchased and protected these last forty-four years with taxpayer money. The conservation assets of these properties cannot be replaced or replicated. We expect the City to carry out the wishes of the donors of this property and the land trust community and continue its efforts to protect this iconic landscape.

MLTC Board of Trustees

By 

William G. Constable, Esq., President



The Landmark Building
34 Main Street Ext. Suite 401
Plymouth, MA 02360
617-723-3383

April 2, 2018

Waltham City Council
City Hall
610 Main Street
Waltham, MA 02452

RE: Impact of Proposed School Site on Stonehurst, the Robert Treat Paine Estate.

Dear City Councilors,

I write on behalf of Preservation Massachusetts regarding the Waltham School Committee's selection of a new school site and the impact of this decision on the Stonehurst Estate and surrounding protected lands. We hope that this letter can be included as part of the public comments on this important matter.

Preservation Massachusetts (PM) is the statewide non-profit historic preservation organization dedicated to preserving the Commonwealth's historic and cultural heritage. Established in 1985, PM is supported entirely by members and concerned citizens. The organization works in partnership with national, state and local preservation organizations and individuals across the Commonwealth to promote the preservation of historic buildings and landscapes as a positive force for economic development and the retention of community character.

Our concerns lie not only with with effect this land taking would have on a National Historical Landmark, of which the City has been a tremendous steward, as well as the precedent setting impact the taking would have on conservation restrictions put in place to protect important environmental and historical landscapes in Massachusetts. The proposal as we understand it, would take at least 13 acres of protected Storer Conservation Lands, part of the overall Stonehurst Estate, to use as the site for a new high school while there is at least one other viable site in the City.

A National Historic Landmark designation honors historically significant places that possesses exceptional value or quality in illustrating or interpreting the heritage of the United States. It is one of the highest historic recognitions the United States Government gives and just over 2,500 places in the entire country can claim this distinction. The history of the Paine family, their ties to the community and the creation of their Stonehurst Estate clearly demonstrates why this site is so important, not just to Waltham and Massachusetts, but the entire country. Iconic names like Frederick Law Olmsted, H. H. Richardson, and Charles Eliot have left



The Landmark Building
34 Main Street Ext. Suite 401
Plymouth, MA 02360
617-723-3383

their mark not just on the Stonehurst buildings, but on the surrounding landscape. One could argue that their legacies to architecture, design, conservation, landscape design and environment is embodied within the entire estate site, of which we know the City must be proud.

The site embodies a remarkable combination of historic preservation and environmental conservation, which made it the perfect site for the signing of the Community Preservation Act into law in 2000. CPA has become one of the best tools for historic preservation and conservation efforts in our state. Preservation Massachusetts was one of the founding organizations for CPA and attended that signing.

The taking of this conservation land would negatively impact a National Historic Landmark and would undo years of stewardship and protection of this site by the City of Waltham. Conservation restrictions are made to protect land and environment in perpetuity. By undoing this restriction, the City is sending a clear message to the community and the rest of the state that, even the best tools we have, it is not enough to protect important community resources. It also signals cultural, environmental and historical resources are not assets to celebrate, learn from and cherish and expresses a lack of willingness to follow the promise to steward this land, its buildings and resources for this and future generations.

The potential statewide impact of this proposal is very real. Communities may see the taking of conservation land or historic buildings previously deemed protected as viable opportunities for development or new construction. As development pressure continues to be intense in many Massachusetts communities, protections such as conservation and deed restrictions are incredibly important to maintaining our environment, open spaces, parks and our connection to nature, especially as we face the impacts of climate changes.

The taking of Waltham's only official conservation land and building a new school on it is an irreversible act, and one that goes against the very wishes of the Paine family heirs and the ethos of preservation and community. We understand and fully support the best possible educational facilities for our children in all communities, but we strongly encourage the Waltham School Committee to consider different sites in the community.

In support of the Friends of Stonehurst and several our fellow preservation and land conservation organizations, we strongly ask you not to proceed with the undoing of years of protections and good stewardship with this proposed land taking. Instead we urge you to re-consider and if necessary re-engage with negotiations for the other sites initially proposed. The effects of this decision not only impact Waltham alone. As Waltham has been such a good steward of this important site for many years, we ask that you not discount the historic integrity of the entire



The Landmark Building
34 Main Street Ext. Suite 401
Plymouth, MA 02360
617-723-3383

Paine Estate, its national significance and its benefits to the residents and community of Waltham.

Thank you for the opportunity to provide our commentary on this important preservation and conservation issue. If our organization can be of any assistance to the City Council, Mayor or residents of Waltham, please contact our office at any time.

Sincerely,

A handwritten signature in black ink that reads "James W. Igoe".

James W. Igoe
President

cc:

Jeanette A. McCarthy, Mayor
William Durkee, CPA Program Manager
Mort Issacson, Vice Chair, Historical Commission
Brona Simon, State Historic Preservation Officer
Stuart Saginor, Community Preservation Coalition
Friends of Stonehurst
New England Chapter, Society of Architectural Historians
The Trustees
Mass Audubon
Mass Land Coalition
Trust for Public Land



HISTORIC[®]
NEW ENGLAND

Defining the past. Shaping the future.

Lyman Estate
185 Lyman Street
Waltham, MA 02452-5645
tel 781.891.4882
HistoricNewEngland.org

April 10, 2018

Waltham City Council
610 Main Street
Waltham, MA 02452

RE: Waltham High School Building Project

To the Honorable Members of City Council:

On behalf of Historic New England and our more than 8,500 members across New England, I write today with substantial concern about the proposal to allocate of a portion of the Robert Treat Paine Estate and Chesterbrook Woods for the construction of a new Waltham High School. We certainly understand the need to provide a high quality educational facility for Waltham's students and, with our strong local knowledge of Waltham through our very active Lyman Estate, we appreciate the challenges in identifying a suitable location that will satisfy regulatory requirements and the needs of the Waltham community. We encourage the City to seek an appropriate location for the high school that affirms that Waltham's irreplaceable historic places and open space resources are worthy of preservation and must be retained.

The Paine Estate, which historically included the portion of land known as Chesterbrook Woods, is a highly significant historic resource, listed on the National Register of Historic Places in 1975 and designated a National Historic Landmark in 1989. The house and surrounding landscape are matched in their significance in Waltham only by Historic New England's Lyman Estate, immediately to the south across Beaver Street, and Gore Place, further east on Main Street. Together, these properties provide a rich experience that is enjoyed by thousands of visitors each year and the scenic landscapes at these properties are essential to appreciation by a diverse audience and continued public benefit. We are grateful to the City for its recognition of the importance of these properties, as demonstrated by the nearly \$2,000,000 in combined Community Preservation Act funds allocated for their preservation in the past decade, approximately \$760,000 of which went to the Paine Estate.

In addition to the City's own investment in the protection of the Paine Estate, it is clear from the preservation and conservation restrictions contained in the 1974 Deed conveying the property to the City of Waltham that Theodore L. Storer and Roscoe W. Brooks intended the property to remain in its then and current scenic, natural, and culturally-significant condition. Article 97 of the Massachusetts Constitution further protects this property based on its long and documented

NOLD TO WALTHAM CITY COUNCIL

Paine Estate and Chesterbrook Woods

April 10, 2018

Page Two of Two

use as public open space. Were the City to succeed in advancing a proposal to use this land for new development, it would set a dangerous precedent that could undermine protections for historic and open space resources across the Commonwealth. Given the recent decision in the case of *Smith v. Westfield*, it seems unlikely that such a pursuit will be successful.

I encourage the City of Waltham to continue to take pride in its historical heritage and take precautions to protect this heritage when deciding the City's future endeavors. To that end, Historic New England urges the City to reject the current proposal to develop a portion of the Paine Estate and Chesterbrook Woods as part of the new High School building project and, instead, to dedicate its valuable time and resources to finding a more suitable location for this important project.

Thank you.

Sincerely,

A handwritten signature in blue ink that reads "Carl R. Nold". The signature is fluid and cursive, with the first name "Carl" being the most prominent.

Carl R. Nold, President and CEO



March 30, 2018

Mayor Jeannette A. McCarthy
610 Main Street
Waltham, MA 02452

Waltham City Council
c/o Assistant City Clerk Joseph Vizard
610 Main Street
Waltham, MA 02452

Waltham School Committee
c/o Dr. Drew Echelson
617 Lexington Street
Waltham, MA 02452

Dear Mayor McCarthy, City Council and School Committee members:

I am writing to you regarding the City of Waltham's search for a new high school site. I certainly recognize the challenge facing you to find a suitable property.

It is our understanding that the Storer Conservation Land and the Chesterbrook Woods are being considered for development for the new high school. These properties are part of a 1,300 acre regional greenway, the Western Greenway, which is a rare amenity and ecological treasure in this densely developed part of Massachusetts. Mass Audubon, through its Habitat Education Center and Wildlife Sanctuary, has been involved in establishing and maintaining the Western Greenway, which has become an important and beneficial regional resource for people and wildlife.

Mass Audubon believes it is in the long-term and best interests of Waltham and its residents to uphold the protection of lands that have been donated or purchased for land conservation purposes. Conserved lands provide many irreplaceable values and benefits, particularly in areas where little undeveloped and unprotected open space remains available.

Mass Audubon urges the City of Waltham to reconsider using these two culturally and ecologically significant tracts of land for a new high school.

Thank you very much for your consideration.

Sincerely,

Gary Clayton
President

March 28, 2018

Robert Treat Paine Storer III, President
Friends of Stonehurst / Robert Treat Paine Historical Trust
100 Robert Treat Paine Dr.,
Waltham, MA 02452

Dear President Storer,

The New England Chapter, Society of Architectural Historians, supports your opposition to the proposed diversion of a portion of the historic Paine Estate property for use as a school.

The proposal for the diversion ignores the important association of this tract of land with the larger Paine Estate and with Henry Hobson Richardson, architect of the Paine house; Fredric Law Olmsted, landscape architect of the estate; and of the Paine Estate's association, in turn, with the Lyman Estate — all key components of Waltham's history. We believe it is also ill-considered because, if successful, such an action would set an unfortunate precedent for the misappropriation, for other than originally intended purposes, of properties that have been dedicated to the public trust in perpetuity. Thus, it could also have a serious chilling effect on such future possible donations throughout the Commonwealth.

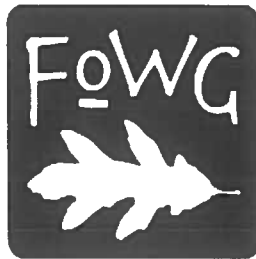
Furthermore, in reviewing the history of the property, there appear to be so many safeguards in place, including a perpetual easement under MGL 184 and the SJC's recent Chapter 97 Westfield ruling, that the School Committee should understand this is not a viable pursuit.

In addition, our membership has noted to us that the property also received an Urban Self-Help Grant. You should be aware that in the case of a much less significant property in Brookline (the former Baldwin school and playground site), last year the acceptance of one of those grants in 1959, together with the Westfield decision, effectively killed a proposal new school for that location. The Urban Self-Help Grant that Brookline had received, which was for the acquisition of a minor part of the total property, included an easement, which had no mapped or described specific bounds relating to the acquired sub-tract, whose language was deemed by Town Counsel to extend to the boundaries of the entire property. (For one reference, see: letter of October 23, 2017; Re: The 9th Elementary School; From: Stephen Wald, of Partridge Snow & Hahn [counsel for opponents]; To: Brookline Board of Selectmen et al.) The town has now dropped consideration of that property.

Best regards,



David Foxe, President on behalf of the Board
New England Chapter, Society of Architectural Historians



FRIENDS OF THE WESTERN GREENWAY

Belmont Citizens Forum • Citizens of Lexington for Conservation • Waltham Land Trust • Mass Audubon

March, 30, 2018

To Whom it May Concern:

The Friends of the Western Greenway, which is made up of the citizens of Waltham, Lexington and Belmont, is opposed to the use of the Storer Conservation Land or the Chesterbrook Woods for construction of a new Waltham High School. Both of these properties are part of a regional greenway, known as the Western Greenway, which consists of over 1,300 connected acres of undeveloped land in the three communities. The properties are joined together by a regional trail, the Western Greenway Trail, which runs through both Storer and Chesterbrook Woods.

The greenway is an irreplaceable and unique regional amenity, improving the quality of life for the residents of all three communities. The uniqueness of the Western Greenway lays in that multiple undeveloped properties are interconnected. This enhances the value of the entirety for people and wildlife over isolated parcels that are islands in a sea of development. The value of each property is multiplied by its connection to the other greenway properties. The loss of any single property is a much larger loss to the value of the remaining intact greenway. Were the Waltham High School be located on the conservation lands, as proposed, it would be the first instance of land in the Western Greenway being lost to development since the greenway was established nearly 20 years ago. A highly unfavorable precedent.

Our group has contributed thousands of volunteer hours creating this outstanding regional resource, building trails, boardwalks and bridges in Waltham as well as maintaining them. We understand that Waltham has to make difficult decisions in locating its new high school. Destroying irreplaceable conservation land whose value is enhanced by being part of this distinctive regional greenway, is we believe, unwise and should not be considered.

Michael Downey
109 Oak Street
Natick, MA 01760
April 6, 2018

Robert Treat Paine Storer, III, President of the Robert Treat Paine Historical Trust
Stonehurst, The Paine Estate
100 Robert Treat Paine Drive
Waltham, MA 02452

Dear Bob,

I am writing to support the Friends of Stonehurst / Robert Treat Paine Historical Trust in their opposition to the proposed development of thirteen (13) acres of forest and conservation land for the new Waltham High School.

The Chesterbrook Woods and Storer Conservation Land (historically part of the Estate of Robert Treat Paine), Olmstead, and the City of Waltham all play a very important role in the early development of American Forestry. As a Massachusetts Licensed Forester (#370), losing a prominent foundation piece to the establishment of my profession is unsettling.

Frederick Law Olmstead provided Mr. Paine lessons in forestry on these lands. These early Forestry lessons in Waltham soon developed into American Forestry. American Forestry began in earnest when Olmstead was hired by George Washington Vanderbilt II to design the grounds of the Biltmore Estate in North Carolina. Olmsted hired Gifford Pinchot and later Carl A. Schenck to manage the Biltmore Estate's forests. Schenck would later establish the first forestry education program in the U.S., the Biltmore Forest School, on the estate grounds in 1898. The Biltmore Estate is considered the Cradle of American Forestry; however, the residents of Waltham should be very proud that the first scientific application of Forestry in America may have well occurred at the Paine Estate!

Bob, I strongly believe that your strong commitment to the stewardship for Waltham's National Historic Landmark and open space is critical to maintaining the cultural and ecological parts of the Estate of Robert Treat Paine. I would strongly urge the City of Waltham to reconsider using these culturally and ecologically significant tracts of lands for a new high school. Olmstead used Chesterbrook Woods and Storer Conservation Land to promote and teach Forestry. Ironically, these lands are now proposed for clearing forest. The conservation and cultural assets of this property cannot be replaced or replicated.

Sincerely,

Michael Downey



About Landslide

Jackson Park (</landscapes/jackson-park>)

The goal of *Landslide*® is to draw immediate and lasting attention to threatened landscapes and unique features.

Landslide sparks debate—revealing the value of everyday places—encouraging informed community-based stewardship decisions. *Landslide* both highlights and monitors at-risk landscapes and creates annual thematic reports to save this heritage for future generations. Through web-based news stories, travelling exhibitions, and print publications, *Landslide* reveals the value of these often forgotten landscapes.

Landslide is designed to educate and thereby rally support at the local, state, and national levels by calling attention to endangered landscapes in communities nationwide. By creating an interactive, online resource, *Landslide* directs the public to local advocates working to safeguard each site. While many *Landslide* properties have been saved, others remain at risk or have been lost altogether.

Landslide articles are written by outside authors and provide a history of the threatened site; its social, cultural, and artistic significance; a biography of the landscape architect or designer, if applicable; and details of the current threat. The articles are reviewed and vetted by TCLF staff prior to publication on our website in hopes of encouraging an informed dialogue.

In This Section

[Find landscapes, pioneers, &](#)

- » [At-Risk Landscapes \(/category/landslide-status/at-risk\)](/category/landslide-status/at-risk)
- » [Saved Landscapes \(/category/landslide-status/saved\)](/category/landslide-status/saved)
- » [Lost Landscapes \(/category/landslide-status/lost\)](/category/landslide-status/lost)

Related Content

LANDSLIDE



LANDSLIDE

Olmsted's Stonehurst Eyed for Development

Mar 23, 2018 | Friends of Stonehurst

Located on a rise amid rolling meadows and glaciated wilderness in Waltham, Massachusetts, the Robert Treat Paine Estate, also known as "Stonehurst (<https://tclf.org/stonehurst>)," is a National Historic Landmark. The 109-acre property, whose house and grounds were the result of an intimate collaboration between Frederick Law Olmsted, Sr. (<https://tclf.org/pioneer/frederick-law-olmsted-sr>), and architect H.H. Richardson (<https://tclf.org/pioneer/hh-richardson>), is owned by the City of Waltham and attracts over ten thousand visitors from across the nation each year. In January 2018, the City announced a plan to take at least thirteen acres of pristine forest and protected conservation land from the property to create a campus for a new high school.

History

In 1866 Robert Treat Paine and his wife, Lydia Lyman Paine, built a summer home ten miles west of Boston in Waltham, Massachusetts. The Paines built just north of "The Vale," a 400-acre estate established in the 1790s by Mrs. Paine's grandfather Theodore Lyman, whose immense success in the shipping business had secured the family's fortune. In September 1881 Mrs. Paine inherited a sizeable portion of The Vale, and within a few years, she and her husband began to expand their summer residence.

The planning for the new home and grounds that would become known as Stonehurst began in 1883. Olmsted and Richardson, who were neighbors and close friends, collaborated on the project from its inception. Olmsted conducted a topographical survey of the site, and by the Fall of 1884, the Paines' original summer home had been moved approximately 1,000 feet west, where it would be joined with a grand Shingle Style addition designed by Richardson atop the rocky ridge. The country estate, whose façade of shingles and boulders is contrasted with its open, grand interior, was largely complete by the time of Richardson's death on April 12, 1886.



Stonehurst, Waltham, MA - Photo courtesy Friends of Stonehurst

Winding drives and paths lined with oak, chestnut, pine, azalea, rhododendron, and mountain laurel create a dramatic approach to the iconic Shingle Style house, which is hidden from the surrounding streets. The grounds are a combination of rolling meadows and glacial forest pierced by several trails. A prominent feature of the property is the elevated, curvilinear southern terrace designed by Olmsted. This sinuous and ground-hugging wall of glacial boulders unifies the house and the surrounding landscape, its rock outcrops seeming to meld with the architecture. The terrace also exemplifies the close working relationship between Richardson and Olmsted, who had already collaborated on a house for Olmsted's son-in-law John Bryant at Cohasset, Massachusetts (1880) and on the Ames Gate Lodge in North Easton, Massachusetts (1880). As Stonehurst was being built, the two men were also working together at Franklin Park (<https://tclf.org/landscapes/franklin-park>), in Boston, which also featured a shelter and its elevated terrace built of boulders placed at the edge of the "Wilderness" overlooking a broad, open field below. Of his terrace in Waltham, Olmsted wrote, "I have never done any of the kind that I liked as much."

Stonehurst is widely regarded as a rare masterpiece of two luminaries working at the pinnacle of their professions. As architectural historian Margaret Henderson Floyd wrote, "This exchange of ideas and theories between architect and landscape designer resulted in houses so intimately connected with their sites that they seem to become one complete vision, merging the shingle style with the geological images."



Stonehurst, Waltham, MA - Photo courtesy Friends of Stonehurst

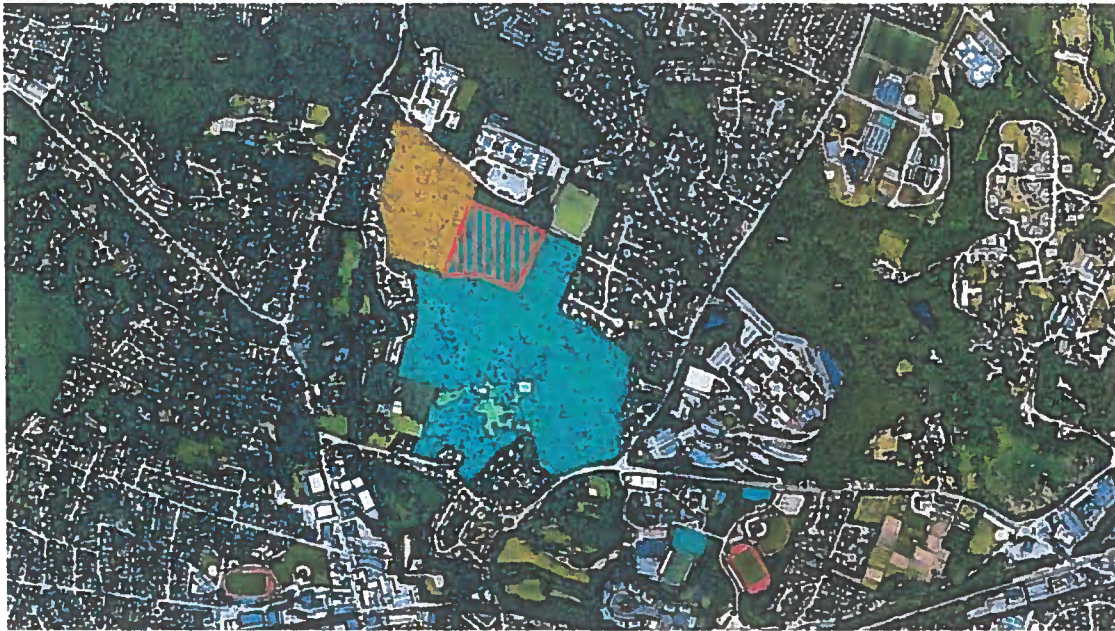
Olmsted's legacy at Stonehurst includes more than the formal landscape and his original design of the site. He instructed Robert Paine on how to care for the estate, giving him "lessons in forestry" on the property's northern woodlots. Notably, this was about the same time that Olmsted was experimenting with new concepts in forestry at Moraine Farm in Beverly, Massachusetts, anticipating his efforts to establish the first fully conceived forestry program in the United States at the Biltmore Estate (<https://tclf.org/landscapes/biltmore>) in North Carolina. Moreover, Olmsted's first apprentice, Charles Eliot (<https://tclf.org/pioneer/charles-eliot>), whose father was Mrs. Paine's first cousin, made subsequent

improvements to the drive at Stonehurst. And in November 1886, John Charles Olmsted, the senior Olmsted's nephew and stepson, wrote to Paine about the prospect of transplanting trees from nurseries to the property, advising him that "trees by the thousands for forest planning can be bought cheaper out west than here."

Robert Treat Paine lived at Stonehurst until his death in 1910. He and his wife became nationally recognized for their efforts to secure better housing and education for workers during the Gilded Age, a time marked by great disparities in income and opportunity. Stonehurst remained in the Paine family for nearly 65 years and was preserved virtually intact. In 1974 Theodore Lyman Storer, a grandson of Robert Treat Paine, donated the house and grounds to the City of Waltham for the public good and with restrictions to maintain the land "in a predominantly natural, scenic, green and open condition forever." The entirety of the estate was designated a National Historic Landmark in 1989 and is the only residential collaboration by Olmsted and Richardson that is open to the public. And yet the wilderness surrounding Stonehurst, so central to the site's identity and an important aspect of its history, is now at risk of being developed.

Threat

In January 2018, the Paine Estate's current owner, the City of Waltham, publicly announced a plan to take at least thirteen acres of pristine forest and protected conservation land from the property to create a campus for a new high school. As much as twelve additional acres (for a total of 25 acres) could be taken from an adjacent 25.5-acre parcel that was historically a part of the estate but is not afforded the same level of historical and environmental protections as the NHL-designated parcel.



The 109-acre Stonehurst NHL district is shown in teal. The proposed school site (red) threatens thirteen acres of the Stonehurst NHL district. Twelve acres of Chesterbrook Woods (orange), historically a part of Stonehurst, may also be taken.

The School Committee is already two years into the planning process for the new school and, until just a few months ago, had focused on three other sites, one of which is the current high school site adjacent to the Paine Estate. Having reached a stalemate on the preferred choice, the chair of the School Committee (who is also the mayor) suddenly unveiled an entirely new plan to take acreage from the Paine Estate as the second of only two options. On February 7, 2018, the School Committee voted in favor of pursuing two options simultaneously: (1) their top choice, a developed, hilltop site nearby; and (2) an alternative option, which they describe as the "augmented" current high school site, now conceived to include more than thirteen acres of Stonehurst. While building a new high school is an important priority for the community, taking land from a treasured local and national resource to do so is both short-sighted and unnecessary. The proposal may reach the City Council in the coming weeks.

What You Can Do to Help

The Friends of Stonehurst, a 501(c)(3) organization also known as the Robert Treat Paine Historical Trust, was formed in 1991 to assist the City of Waltham in its stewardship of the estate. As a response to the impending threat, the Friends helped found the Coalition to Preserve Paine Estate Woods (<https://www.preservepaineestatewoods.org/>), which is quickly mobilizing. The Coalition currently includes the Friends of Stonehurst, the Waltham Land Trust, and hundreds of concerned citizens.

Sign a petition (<https://www.change.org/p/coalition-to-preserve-paine-estate-woods-preserve-paine-estate-woods>) declaring the importance of protecting Stonehurst for future generations, and visit the Friends of Stonehurst website (<http://stonehurstwaltham.org/advocacy/>) for more information and updates about the advocacy campaign.

Spring 2018 Volume 35, Number 1 www.olmsted.org

FIELD NOTES



We are the only national nonprofit organization dedicated to advancing the Olmsted legacy.

[Support NAOP!](#)

In This Issue

[NAOP Annual Meeting in Washington, D.C.](#)

[Rock Creek Park: A Personal View](#)

[Advocacy Update](#)

[Olmsted Online Update](#)

[NAOP Trustees in the News](#)

[News from Around the Country](#)

[Baltimore, MD](#)

[Boston, MA](#)

[Essex County, NJ](#)

[Hartford, CT](#)

[Houston, TX](#)

[Indianapolis, IN](#)

[Jacksonville, FL](#)

[New Canaan, CT](#)

[New York City, NY](#)

[Portland, OR](#)

[Riverside, IL](#)

[Seattle, WA](#)

[Syracuse, NY](#)

[Waltham, MA](#)

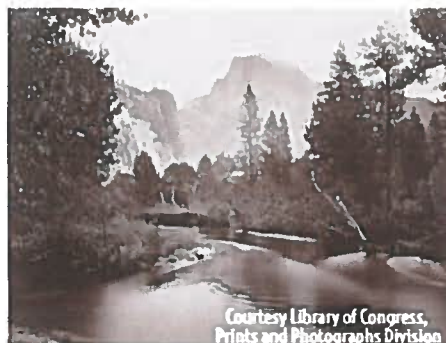
[Book Review](#)

[News from LALH](#)

NAOP Annual Meeting in Washington, D.C.

By Lucy Lawliss and Arley Levee, NAOP Co-Chairs

Spring is a time of new life and new beginnings, so in keeping with the 2018 Spring season, the National Association for Olmsted Parks is convening its annual board meeting this April in Washington, DC, to connect with old friends and new colleagues to nurture an expanded appreciation of the Olmsted landscape legacy. From April 19–21, NAOP in partnership with the American Society of Landscape Architects (ASLA) and the National Park Service staff at Rock Creek Park (see companion article) is hosting a series of events around the theme *Envisioning Nature: The Olmsted Firm and the American Park*.



The weekend will begin on Thursday evening with a panel discussion of important new research by Rolf Diamant, Lauren Meier, and Ethan Carr, authors of *The Olmsteds and the National Park Service*, a study undertaken by the Organization of American Historians and the Frederick Law Olmsted National Historic Site as part of the NPS centennial. Moderated by retired NPS regional director and landscape architect, John Reynolds, *A Continuity of Purpose: The Olmsteds and the National Parks* considers the full body of national park

work—writing, planning and designing—that began in 1865 with Frederick Law Olmsted's Yosemite and the Mariposa Grove: *A Preliminary Report*. National park work continued through to the end of Frederick Law Olmsted, Jr.'s life in 1957 and, in that century of engagement, the Olmsted firm made many significant contributions to the growth of the national park system and the park service. The event will be held at the newly opened Center for Landscape Architecture at the ASLA headquarters.

On Friday evening, April 20th, a second panel will convene at the National Zoo Auditorium to consider how the Olmsted legacy resonates today at our country's third national park to be established—Rock Creek Park. This event is in celebration of the 1918 Olmsted Brothers report, which set forth the principles and parameters for this remarkable 1,754-acre wedge of riverine landscape winding through northwest Washington and into Maryland's Montgomery County, retaining natural scenery and recreational opportunities to enhance our nation's capital. Justin Martin, author of *Genius of Place: The Life of Frederick Law Olmsted*, and landscape architect, planner, and author of the *Washington Journal* article on the history of Rock Creek Park, Piera Weiss will explore this gem of scenery and nature in its historical context and its functions and challenges as essential green and recreational infrastructure for the thousands of residents and visitors in this dense urban environment.

One hundred years after the Olmsted firm articulated both the vision and the challenges of setting aside this wedge of "wild" nature for the enjoyment of all, Perry Wheelock, former Rock Creek Park historian and now Associate Regional Director for Resource Stewardship and Science for the National Capital Region, will lead a Saturday morning tour to examine on the ground the constraints and victories in conserving, preserving and managing this landscape reservation in a complex urban area.

Information and registration for these three events is available through the ASLA website. There is limited seating for the Thursday evening event and Saturday's tour, so act quickly if you want to be part of these important and interesting presentations. To register to the events click

travels to places such as Russia, China, France and Norway. An online finding aid can be found at www.libguides.esf.edu/steele. This aid contains inventory lists and images regarding Steele's postcard collection, garden plans, scrapbooks and photographs. Since 2014 we have digitized over 1,000 items including hand-drawn and very fragile garden plans and a small sampling of photographs of gardens. These and soon-to-be-digitized nursery orders can be found on [the New York Heritage digital repository site](#).

Steele's commitment to his clients and gardens can be seen in his meticulous dedication to document the gardens he created. For example, from 1933–35 Steele worked on gardens for a property called Hyghe Contente for Mary Kenly in Manchester-by-the-Sea, Massachusetts. This almost 4 acre property with an 8,000 square foot house overlooking the Atlantic is currently being restored using construction photos and hand-drawn plans available online.

If you are a landscape architect, faculty, student, gardener or avid Steele follower, as I am now, and would like to learn more about our Fletcher Steele Archives, please do contact me at jmveros@esf.edu.

Waltham, MA

Stonehurst, the Robert Treat Paine Estate, Faces a Crisis

On an early field trip in the summer of 1893, industrial institute students from Boston marveled at the country estate of their founder Robert Treat Paine in Waltham, Massachusetts. They "had never seen such a country place before. The natural park of pines, oaks and great forest trees stretches for acres in every direction." In keeping with their lifetime dedication to improving the quality of life for all, the Paines had chosen Frederick Law Olmsted, champion of "parks for the people," as the landscape architect for their country residence. They also had chosen Olmsted's friend, neighbor, colleague, and "greatest artistic influence," Henry Hobson Richardson to be its architect. Together, America's preeminent designers created a cohesive organic design for Stonehurst inspired by the American wilderness.

Today, Stonehurst in Waltham, a National Historic Landmark, is the only residence open to the public designed collaboratively by Olmsted and Richardson. Each year, hundreds of students take field trips to the municipally-owned house of glacial boulders, pleasure grounds, fields and forest. High school students and thousands of other residents count on regular walks on the century-old system of public trails that link to a regional trail system and crisscross woodlands where Olmsted himself gave Paine "lessons in forestry."



Then in January 2018 the inconceivable happened. The Paine Estate's current owner, the City of Waltham, publicly announced a plan to take at least 13 acres of pristine forest and protected conservation land in order to create a campus for a new high school.

To quote landscape architect Tom Paine, Vice President of the Friends of Stonehurst, "These struggles of competing goods—a school and protected open space—call on us to take action simply to hold onto what we thought we had already saved." Since the acquisition of the property in 1974, the City pursued and readily accepted layer upon layer of deed restrictions, grant restrictions, and State Constitutional protections.

Stunned but undaunted, the Friends are redoubling our efforts to live up to our mission "to provoke thought and provide historical perspective on contemporary social and environmental issues by ensuring that diverse audiences enjoy, appreciate and draw inspiration from Stonehurst and the legacy of its creators." For example, we are strengthening community partnerships and forging new relationships through creative programming. On a public walk in the woods with the Waltham Land Trust on March 10th, visitors imagined being in the company

of the Paines and Olmsted and shared their hopes and dreams for the future of the land in the 21st century and beyond. With the Waltham Public Library and Land Trust this spring, actor Gerry Wright will give a family-oriented roving performance of Olmsted. Student field trips in May and June will place an even greater emphasis on Olmsted's democratic vision for public parks.

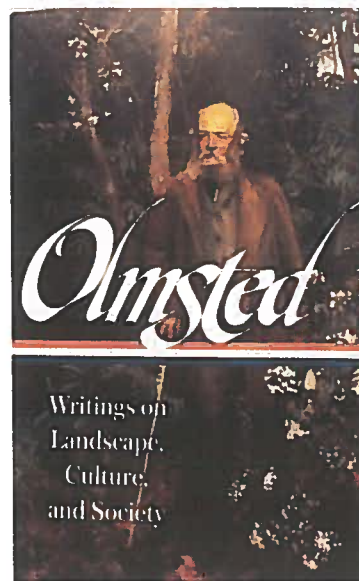
For more information, email friends@stonehurstwaltham.org or visit www.stonehurstwaltham.org. For a grassroots coalition efforts, see www.preservepaineestatewoods.org.

NAOP, distressed by this threat to this notable historic property which still retains much of the integrity from the senior Olmsted and HH Richardson design collaboration, urges you to add your voice in protest and sign this [petition](#).

Book Review

By Esley Hamilton, NAOP Advisory Council

Charles Beveridge Edits New Olmsted Book for Library of America



Now that the Olmsted Papers project is winding down, our veteran editor, Charles Beveridge, has produced a new selection of Frederick Law Olmsted's work, *Olmsted: Writings on Landscape, Culture, and Society*. It is Volume 270 in the Library of America series, a distinction that spotlight's Olmsted's status as one of America's best writers. The Library of America is a non-profit organization founded in 1979 with the assistance of the National Endowment for the Humanities and the Ford Foundation. Its unmistakable volumes, with their shiny black dust jackets and short, chubby shapes reminiscent of munchkins, are conspicuous in many libraries and bookstores. The Olmsted book differs, however, from the typical LOA offering, which tends toward reprints of full-length works or, in the case of less prolific writers, collections of the essential or the complete works. Instead, Beveridge has included 107 selections, generally ranging in length from one to twenty pages and drawn

in substantial part from private letters and so-called "fugitive" writings, such as newspapers articles and letters to the editor. The longest pieces are the famous description of the Olmsted & Vaux Greensward Plan for Central Park, from 1858; the 1866 report on Yosemite; and the 46-page essay "Frontier Society" from 1866. Together these selections form an intellectual biography of the writer, with some of the narrative flow of a 19th-century epistolary novel. In this, Beveridge's choices contrast with Robert Twombly's in his 2010 book for Norton, *Frederick Law Olmsted: Essential Texts*. That anthology is limited to sixteen texts grouped into five themes. Beveridge's book is also enhanced by two groupings of color and sepia illustrations. All in all, it is a handsome and worthy addition to a distinguished series.

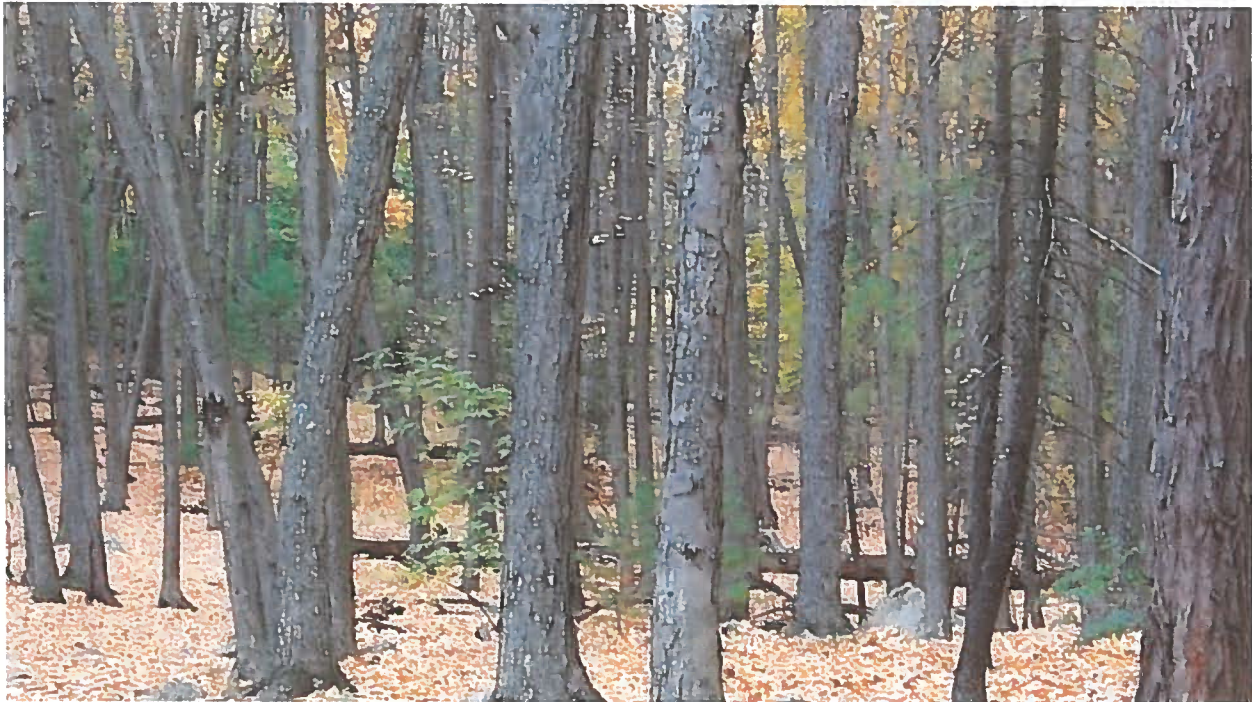
News from The Library of Landscape History (LALH)

Ellen Shipman and the American Garden by Judith B. Tankard will be released by the Library of American Landscape History in April. The revised edition of the original biography (LALH 1996) features a larger format, new color photographs, and a new introduction about recently discovered Shipman gardens. To read more click [here](#).

The Foundation for Landscape Studies recently awarded the J. B. Jackson Book Prize to *Warren H. Manning, Landscape Architect and Environmental Planner*, Robin Karson, Jane Roy Brown, and Sarah Allaback, eds. Warren H. Manning was also selected as an Outstanding Academic Title for 2017 by Choice magazine. To read more click [here](#).

James Rose by Dean Cardasis and *Lawrence Halprin* by Kenneth Helphand—the second and third volumes of the LALH Masters of Modern Landscape Design series—are also both winners of the J. B. Jackson Book Award. To read more about *James Rose* book click [here](#). To read more

Preserve Paine Estate Woods Petition



Preserve Paine Estate Woods started this petition to Preserve Paine Estate Woods

The City of Waltham, Massachusetts, has publicly announced a plan to carve out a huge, centrally located part of the Robert Treat Paine Estate for the campus of a new high school. We, the signers of this petition, are strongly opposed to constructing a school campus on any piece of the estate, a National Historic Landmark and Olmsted park.

New York's Central Park is one of Frederick Law Olmsted's premier achievements and is known and celebrated around the world. It would be inconceivable for the City of New York to carve up Central Park to build a school. Yet the Paine Estate now finds itself threatened by the City of Waltham with just such a situation.

Precisely because we so deeply care about our children and their education, we oppose any destruction of Waltham's cultural and environmental resources whose preservation is in the best interest of the children of today and of the future.

<https://www.change.org/coalition-to-preserve-paine-estate-woods-preserve-paine-estate-woods>

If successful, the proposal to pursue one of the most protected lands in Waltham and our only Olmsted landscape would reverse decades of preservation and conservation advancements, violate the expressed wishes of the donors, and set a dreadful precedent for deforesting and developing protected lands that make our community so desirable. It would undermine the very ideals of the estate's creators: the philanthropic Paine family, Charles Eliot who founded America's first land trust, and Frederick Law Olmsted, father of America's public and national parks.

Carving up the Paine Estate would send a terrible message to Waltham's students that historical and natural treasures do not matter and that deforestation is acceptable in this era of increasing climate change.

The Paine Estate has been designated a National Historic Landmark, one of only 2,500 historic places, along with the Statue of Liberty, that bear this national distinction. National Historic Landmarks represent outstanding aspects of American history and culture and are considered sacred across the entire United States.

Theodore Storer and other Paine heirs donated and sold the 109-acre Robert Treat Paine Estate/Storer Conservation Lands to the City of Waltham in 1974 with restrictions "for the purpose of maintaining said parcels in a predominantly natural, scenic, green and open condition forever." Since then, the City of Waltham has honored the promise to preserve this land, added protections, and even purchased 25 acres of adjacent woodlands (known as Chesterbrook Woods) to reunite them with the rest of the Paine Estate.

Until now, the City's intent has been clear: this land is cherished and untouchable.

Not only is this plan a complete betrayal of the legal commitment to conserve the Paine Estate, it would face an uphill and prolonged legal battle to become a reality. Local, state and national organizations oppose this plan. The plan would have to be approved by a two-thirds vote of the Massachusetts State Legislature (Article 97). If the goal is to procure, in a timely manner, an appropriate parcel to build the new high school, then this plan should be abandoned.

Destroying this important greenspace that nurtures the residents of Waltham would establish a precedent that broadly threatens our quality of life. Deforesting and developing a National Historic Landmark, "the City's only official conservation land," for a school campus would be an unacceptable and irreversible decision with grave and lasting consequences extending well beyond Waltham. We urge you to find a solution for locating the much-needed new high school for our children that does not sacrifice our community treasures and values.

We implore the School Committee, City Council and Mayor to discard the proposal to use any portion of the Paine/Storer/Chesterbrook land for the new high school campus.

Preserve Paine Estate Woods Petition Comments

March 5, 2018 to April 6, 2018

Robert Storer	Sherborn	MA	3/5/2018	We need to protect our National Treasures and historical conservation lands. This would be a horrible precedent.
Marvin Vasquez	Acton	MA	3/5/2018	I care
Dorothy Lyon	Brooklyn	NY	3/6/2018	I'm signing for the residents of Waltham so that they will continue to have a place to enjoy nature within the city. Let's keep undeveloped city land undeveloped and build in areas where there has already been construction. Future generations will thank us for it.
Judy Pitcher	San Diego	CA	3/6/2018	Just wrong
Sarah Lyon	Rutland	MA	3/6/2018	we need to preserve nature in our urban environments in order to improve the quality of our lives
Erika Bourne	Waltham	MA	3/6/2018	The woods are there for everyone to enjoy and should be left in their natural state. It is short sited to destroy such a beautiful place and would dishonor the gift that was given to the city by the Paine/Storer family.
Roger Lawrence	Rutland	MA	3/6/2018	Because woodland space is so important
Rheanna Lanoie	Acton	MA	3/6/2018	We Have to fight for these precious and historic green spaces. They can't be reclaimed once lost.
Joan Golden	Worcester	MA	3/6/2018	This is important to me, my friends & neighbors.
Brian LaBau	Newton Center	MA	3/7/2018	It is crucial to protect such an important piece of Waltham history for future generations.
Brian LaBau	Newton Center	MA	3/7/2018	It is crucial to protect such an important piece of Waltham history for future generations.
robyn Sahleen	South Jordan	UT	3/7/2018	leave this land untouched!
Marjie Alonso	Somerville	MA	3/8/2018	We need our public land for sanity and space and some connection to nature.
Marvin Kabakoff	Jamaica Plain	MA	3/9/2018	We need to preserve our historic landscapes.

Preserve Paine Estate Woods Petition Comments

March 5, 2018 to April 6, 2018

Lisa Levheim	South Hadley	MA	3/9/2018	I loved this beautiful area when I was in college. It would be shortsighted to eliminate any part of it!
ADELE LEVINE	St Louis	MO	3/9/2018	I walked past this area frequently when I was at Brandeis. It's a travesty to destroy an area that can't be replaced!
Rosemary Miller	Waltham	MA	3/11/2018	I am signing in order to ensure that this wooded area is preserved as is for generations to come.
Hilary Mastropaul	Newtonville	MA	3/11/2018	I am signing because we need to preserve history. Period.
D P	san mateo	CA	3/11/2018	We need a new school, but NOT on a national historic landmark! Do not destroy a piece of history!
Elizabeth Paynter	Waltham	MA	3/11/2018	This is conservation land and part of the well preserved Paine Estate, a National Historic Landmark and Olmstead park. It should not be sliced up. There are other pieces of land better suited for the High School.
Teresa Blagg	Somerville	MA	3/11/2018	I love this place so much, and I would hate to see it destroyed for a building project!
Caren Silverlieb	Belmont	MA	3/11/2018	Let's not lose the little bit of nature we have left in the area.
Catherine Demetriadi	WHITHORN	SCT, UK	3/11/2018	As a former Waltham resident and Waltham Tribune columnist (under my maiden name, Clark), I spent time in these woods, enjoying this oasis in an increasingly urbanized town. They are a treasure!
Steve Pollock	5-11-24 shimomeguro, meguro-ku, Tokyo	Japan	3/11/2018	Please stop this plan! The historic property and gardens are an integral part of this estate that was donated to the city with the understanding that it would be preserved in perpetuity. Once it is lost, it is gone forever. Moreover, going against the wishes of the donor and using the land for other purposes would send a terrible message to others about the city's willingness to violate prior agreements.

Preserve Paine Estate Woods Petition Comments

March 5, 2018 to April 6, 2018

Michelle St. George-Coyle	Lakeville	MA	3/11/2018	Not only is this a beautiful public space, but it's where Allan and were married. Please join me in opposing the City of Waltham's proposed development of Stonehurst and the Paine Estate.
John Keefe	Waltham	MA	3/11/2018	Plenty of other areas in town to build new high school. Jack
marilee meyer	cambridge	MA	3/11/2018	have we learned nothing from erasing our heritage over the years? This is a very important site not appropriate for a high school.
Philip Moser	Waltham	MA	3/11/2018	I'm signing this because I believe green space preservation should be a high priority in our community. Growth should be accommodated by densifying and redeveloping existing developed sites, not by extending the sprawl of low-rise buildings and surface parking lots into our few remaining natural areas.
Elizabeth Merrick	Somerville	MA	3/11/2018	The Paine Estate, including its wooded area, is a historical and environmental treasure, valued by people throughout the region! Preserving the estate in its entirety is a priceless legacy for the future. Surely with further consideration the City of Waltham can identify an alternative for new school facilities. Otherwise the city will be renowned for its shortsighted destruction of an irreplaceable landmark and its "de-greening" in an era of climate change.
Leslie Lehmann	Brighton	MA	3/11/2018	Green space preservation is critical for the health of an area. Waltham has plenty of empty buildings that could be torn down or renovated for a high school. There's no need to destroy a treasure.
Cynthia D. Payne	Williamstown	MA	3/11/2018	Once a park, especially one designed by Olmstead, has been destroyed by turning it into a building lot it can never be restored to it's previous state.

Preserve Paine Estate Woods Petition Comments

March 5, 2018 to April 6, 2018

Beth Zonis	Lexington	MA	3/11/2018	My husband and I were married at the Robert Treat Paine Estate. It is a gem of a property and should be left in fact! This is a Waltham treasure that should be treated as such!
marilee meyer	cambridge	MA	3/11/2018	The Paine estate, designed by HH Richardson, is also across the rotary from Historic New England's Lyman Estate known as the "Vale" which has some of the earliest green houses in the country. This whole neighborhood off Lyman St is home to a New England legacy and helps tell a New England story. The traffic- buses, pick-up, pedestrians and parking lots would ruin the basic bucolic nature of this site. Please don't do it!
Robert Kahler	Lynn	MA	3/11/2018	I was lucky enough to be chosen to install the wallpaper over the last few years in two of the bedrooms. Once the land is gone you can never get it back
Jeanne R Ryan	Braintree	MA	3/11/2018	Not necessary and short sighted! Stop looking for the easy solutions work harder and find a better solution- there are numerous options!
Trudi Goodman	Cambridge	MA	3/12/2018	Yes! Absolutely!
Mike Foster			3/12/2018	The woods need to be saved
Patsy Sullivan	Milton	MA	3/12/2018	Please help save this historical treasure!
James Williamson	Cambridge	MA	3/12/2018	And I'm wondering how many parking spaces are being contemplated?? (Not enough, I'm sure, to fully satisfy the ever-eager marauders of The Commons.) I've actually been to this landmark site, and building, and I don't happen to even live in Waltham. One would hope that key decision-makers in Waltham would want to preserve the special amenities and historic landscapes which draw people to Watch City.

Preserve Paine Estate Woods Petition Comments

March 5, 2018 to April 6, 2018

Elisse Ghitelman	Waltham	MA	3/12/2018	Children see what we do more than what we say. If we say we love the earth and care about it, but harm this beautiful preserve, we teach them that nature doesn't matter!
Jeff Treistman	Seattle	WA	3/12/2018	Real estate is a fixed commodity that is valuable far beyond developers profit. Preserve, maintain and expand public green spaces.
sandy lach	framingham	MA	3/12/2018	Preserve history!
GAIL SPAULDING	HANCOCK	MA	3/12/2018	Please leave this space as it was entrusted to our city. There are other viable options without destroying this gem!
Louise Zonis	San Francisco	CA	3/12/2018	I want to protect this beautiful landmark and the natural buffer its trees provide to the area. We owe this to our children and their children, and so on.
Fred Bailey	Bedford Hills	NY	3/12/2018	Open land/ green space must have stewards, protecting it and maintaining the eco space for wildlife and to preserve plants and trees. I am one of those stewards.
Mike Greenly	New York	NY	3/12/2018	We need to preserve our history -AND we need to preserve our trees!
Leslie Leon	Sudbury	MA	3/12/2018	the Robert Treat Paine Estate is a part of my family heritage.
Wendy Drexler	Belmont	MA	3/12/2018	This parkland is an important historic site, as a National Historic Landmark, and a cultural and environmental resource that needs to be protected.
Alexander Emerson	Belfast	ME	3/13/2018	And replace the betrayers of Waltham with people who keep their word and honor their forefathers words.
Dennis M Conway	South Boston	MA	3/13/2018	Utilize commercial and industrial site and preserve these scare natural preserves for the future generations.

Preserve Paine Estate Woods Petition Comments

March 5, 2018 to April 6, 2018

Deana Tavares	Dedham	MA	3/13/2018	National Historical Landmark, preservation, conservation land, and Frederick Law Olmstead say no more. Also children are being taken further and further away from nature which enhances nurturing compassionate behavior and facilitates balance. Destroying and building upon protected land? I expect a lot more from the Educated individuals in Massachusetts!
Jennifer Evans	North Reading	MA	3/13/2018	We need to protect nature and habitat for humans and animals
Luci Cedrone	McLean	VA	3/13/2018	Let's teach our children to preserve nature and respect history and to solve problems creatively, rather than taking the easy way out. Destroying these woods for the new high school is neither a responsible use of the land nor a good example.
Ruth Kahn	Auburndale	MA	3/13/2018	This historic, beautiful forest is a national treasure and should be preserved in perpetuity!!!
Bonnie Brennan	Chicago	IL	3/13/2018	It would be a travesty to carve up this beautiful piece of land.
Ruth Dain	Newton	MA	3/13/2018	Our first are so very important to our well being.
Alida Silverman	Atlanta	GA	3/13/2018	I am an Olmsteder: I believe that our Olmsted landscapes should be preserved for future generations so they can see the legacy of an American genius, the father of American landscape architecture.
Diane Plotts	Waltham	MA	3/14/2018	These woods are a important landmark and should be preserved. They serve as a natural habitat to several species of wildlife that would be displaced. I purchased my home in September specifically because the Chester Brook woods back up to my back yard.
Elizabeth Brenner	Waltham	MA	3/14/2018	We need protected green space in Waltham
Judith Paradis	Brookline	MA	3/15/2018	Judith Paradis

Preserve Paine Estate Woods Petition Comments

March 5, 2018 to April 6, 2018

Maria Dewees	East Montpelier	VT	3/15/2018	Paine Estate is part of my family heritage. I was married there and love this place!
Ruth Hopkinson	Waltham	MA	3/15/2018	The Chesterbrook Woods are valued and enjoyed daily by many people. The woods are a Waltham sanctuary that should be and must be protected.
Deborah Schreiber, Esq	Waltham	MA	3/17/2018	I love this place and start every day there, listening to the amazing sounds of nature.
Claude Scales	Brooklyn	NY	3/17/2018	Please preserve this woodland cherished by many, including Frederick Law Olmsted, designer of Central and Prospect Parks.
Wilma Ronco	Lexington	MA	3/17/2018	I'm signing because I want to preserve this public space for now and future generations, and to keep the promise made to keep the land in its natural state.
Rebecca Haley	Waltham	MA	3/17/2018	I am signing because I want to preserve an important historical space, designed by Frederick Law Olmsted; because having a large forest full of beautiful plants, trees, stones, and water features is vitally important to me; and because this is a public space that shouldn't be given over to the high school. We should protect this resource and not be short-sighted. I am sure the school can figure out another way to build the space they need—perhaps vertically?
Sandra Spring	Waltham	MA	3/18/2018	This is an amazing and wonderful place that I enjoy daily on walks with my dog. Every day, there is something new and beautiful to see. It's been a lovely place for people to enjoy photography, cross country skiing, walks with their kids, walks with their dogs, meditation, fitness, and getting out and enjoying nature. We are so lucky to have such a treasure in our backyard. I truly hope it remains.
William Glavin	Berkley	MA	3/18/2018	Nesting owls are found here. Construction can not begin where owls are nesting. :)

Preserve Paine Estate Woods Petition Comments

March 5, 2018 to April 6, 2018

Bill McDowell			3/18/2018	The woods are a beautiful place in our city. It's trails and paths are places where we can enjoy nature in all seasons. Do not desecrate the unspoiled beauty of this gem.
Linda Christlieb	Cambridge	MA	3/18/2018	Save Paine Estate
Kathleen Johnson	Waltham	MA	3/18/2018	This historic piece of property consisting of beautiful trails, vernal pools, and natural landscapes must be preserved and protected and must never be considered for development. It is important that our children have open space to exercise, explore, and appreciate nature. How foolish for Waltham to even consider developing this pristine parcel of land visited by hundreds of people every day on a regular basis. If this land is developed, it will forever be a reminder of all that we have lost.
Kathleen Johnson	Waltham	MA	3/18/2018	This historic piece of property consisting of beautiful trails, vernal pools, and natural landscapes must be preserved and protected and must never be considered for development. It is important that our children have open space to exercise, explore, and appreciate nature. How foolish for Waltham to even consider developing this pristine parcel of land visited by hundreds of people every day on a regular basis. If this land is developed, it will forever be a reminder of all that we have lost.
Clare Welch	Waltham	MA	3/19/2018	We don't have too many beautiful places to walk left in Waltham to walk.
Melyssa Atwood	Lincoln	MA	3/19/2018	We need to have Places to walk in the woods in this area
Dorothy Bisson	Sudbury	MA	3/19/2018	This property is sacrosanct and should be kept as intended, as a beautiful part of history and nature.

Preserve Paine Estate Woods Petition Comments

March 5, 2018 to April 6, 2018

Andrea Carr-Evans	Framingham	MA	3/19/2018	it's inconceivable that cities and towns are using open space for development when there are plenty of under utilized properties that could be redeveloped. look harder for pieces of property to redevelop and cherish the open space.
Jimmy Kalogeropoulos	Westford	MA	3/19/2018	Should be kept the way it is. I'm sure they can find another location that makes more sense.
Raymond Phillips	Sudbury	MA	3/19/2018	Once it's gone it's gone!
Lois Mason	Lexington	MA	3/19/2018	Preserve this historic site. Once it is developed it is lost forever as a precious part of Waltham and American history! Please consider this land to be an irreplaceable treasure for future generations.
Patricia Fletcher	Belmont	MA	3/19/2018	Save Paine Estate
Sandra mercier	Port Orchard	WA	3/20/2018	I think we need to leave Historic places alone. We lose a little bit of history every day! Leave something for our great grandchildren to enjoy@! Thank you
Damon Michaels	Marlborough	MA	3/20/2018	Waltham has very little land left, and this land is of historical significance. Do not violate the wishes of the donors.
rachel dolmatch	Quincy	MA	3/21/2018	Stonehurst is one of my favorite places in Massachusetts- the building AND the environment. With green space dwindling in the metro area, preserving Stonehurst as it is seems worth more than its loss to development. A better solution should be considered to accommodate Waltham High School while keeping the grounds of Stonehursts accessible to the residents of Waltham- and its visitors. Thank you.

Preserve Paine Estate Woods Petition Comments

March 5, 2018 to April 6, 2018

Robert Perry	Waltham	MA	3/21/2018	I am sympathetic to the challenges the City faces meeting the vital needs of our students in the coming decades. However, carving a giant chunk out of conservation land is violating a commitment and destroying a unique natural habit and sanctuary forever.
Andrea Franz	Charlestown	MA	3/22/2018	This is a beautiful and historic park and should be retained as such. There must be other options for the High School - there must be developments/businesses that are abandoned that the city could usurp for their needs - but not open wild spaces.
Livia Woodsum	Newmarket	NH	3/22/2018	Let me begin the the reason that people are blessed to have trees that provide food, home and shelter to wildlife.
Kathleen McGrath	Concord	MA	3/23/2018	Conservation land is held in trust for the people to enjoy by the municipalities that have control of it. Unfortunately, sometimes those municipalities do not act in accordance with that trust. Once developed, conservation land cannot be reclaimed. If we allow this to happen, there will be no parks, no forests, no place to go to enjoy nature.
Darcy brandt	Waltham	MA	3/23/2018	Find another spot
Judith DiMarzo	Wayland	MA	3/26/2018	Judith Keegan DiMarzo
Donna Higgins			3/26/2018	Peserve Paine Estate Woods!!!
Jean Svizzero	Brookline	MA	3/27/2018	Let the trees stand so we can breathe easier, find shade and experience something other than asphalt under our feet.
Steve McMurchie	San Jose	CA	3/27/2018	Steve McMurchie ASLA

Preserve Paine Estate Woods Petition Comments

March 5, 2018 to April 6, 2018

Karen Jessup	Providence	RI	3/27/2018	Good grief! A supposedly enlightened community like Waltham potentially developing part of an NHL? What message does this send to high school students about their collective history if their new school encroaches on the property?
Jacqueline Lansing	Denver	CO	3/27/2018	Forests and the flora and fauna within them are sacred. Only God can make a tree. This Frederick Law Olmsted Landscape design is magnificent and priceless. Testimony to this is its designation by the National Park Service as a National Historic Landmark.
Kevin Bryan Shea	Waltham	MA	3/27/2018	A promise is a promise what kind of message is Waltham sending to our students and our neighbor's in this Commonwealth!
Kevin Bryan Shea	Waltham	MA	3/27/2018	A promise is a promise ! What kind of message our we sending to our students and neighbors in this Commonwealth? It's hard to believe Mr. Storer needs to plead for the preservation of the Paine Estate and Storer conservation land that their family's donated to the City.
Kevin Bryan Shea	Waltham	MA	3/27/2018	It's the right thing to do!
Cyril Khazan	woodmere	NY	3/27/2018	Old trees are irreplaceable. Landmark park - even more so!
Ruth Miller	West Hartford	CT	3/27/2018	This is a masterpiece of landscape, and needs to be preserved in total, for future generations.
Donnamarie Castellano	Ocala	FL	3/28/2018	Preserve our trees and park areas! PLEASE!
Penelope Watson	Greenwich	NJ	3/28/2018	The City of Waltham, as stewards of this National Historic Landmark, must fulfill their responsibilities and preserve it, particularly since there are alternative sites available for the new high school.

Preserve Paine Estate Woods Petition Comments

March 5, 2018 to April 6, 2018

Orlando Medeiros	Waltham	MA	3/28/2018	What is our legal right to consult with attorneys on a possible lawsuit against the City and School Committee? I wonder if those who are in favor, would support it if it were their own backyard?
Faith Calhoun	Waltham	MA	3/30/2018	Why would anyone want to give the city of Waltham land for open space in the future?
nan boucher	Portland	ME	3/30/2018	This is not an acceptable option. The National Historic Landmark is just that, not a building a site. Let us be forward thinking. Planning and development can do better than this.
nancy leone	tolland	CT	3/30/2018	Remember that people have power in numbers. Sign the petition and tell yourfriends!
Janet Sheridan	Salem	NJ	4/1/2018	It is too significant to be marred.
June Kinoshita	Waltham	MA	4/2/2018	These beautiful woods are a jewel of our city and should be preserved intact for future generations.
Sharon DeMedeiros	New Bedford	MA	4/3/2018	What a ridiculous proposal! Whoever thought this up should be fired! And if it's not illegal, it certainly should be! That land is held in trust. The notion that it and other lands all across America that are held in trust for the American people should be used and destroyed are so short sighted. These lands can never be restored once they are developed. You must stop this relentless destruction of our natural spaces, they are vital to the health and we'll being of us and our planet!
Nicole Urell	Waltham	MA	4/5/2018	The woods around the Paine Estate are a beautiful, historical natural resource. Taking 25 acres of protected land, enjoyed by so many, would set a precedent for ANY protected land to be taken and developed. I'm ready to act to prevent this!

Preserve Paine Estate Woods Petition

Signatures

March 5, 2018 to April 6, 2018

erika waly			US	3/5/2018
Robert Storer	Sherborn	MA	US	3/5/2018
Judith DiMarzo	Wayland	MA	US	3/5/2018
Thomas Paine	Boston	MA	US	3/5/2018
Lewis Stackpole	Vancouver	WA	US	3/5/2018
Caroline Cline	Nicholasville	KY	US	3/5/2018
Maureen Fowler	Bedford	MA	US	3/5/2018
Sally Brooke	GreatBarrington	MA	US	3/5/2018
Ann Clifford	Natick	MA	US	3/5/2018
Rheanna Lanoie	Waltham	MA	US	3/5/2018
Marvin Vasquez	Acton	MA	US	3/5/2018
Roberta Marino			US	3/5/2018
Francisco Melendez			US	3/5/2018
Ryan Watson			US	3/5/2018
Charis Jacobson			US	3/5/2018
Mark Willis	Waltham	MA	US	3/5/2018
Bridgette Ferrante	Acton	MA	US	3/5/2018
Kimberly Arteaga			US	3/5/2018
Holly Williams	Waltham	MA	US	3/5/2018
Andrea Willis	Waltham	MA	US	3/5/2018
Dorothy Lyon	Brooklyn	NY	US	3/6/2018
Catherine Crawford	Phoenix	AZ	US	3/6/2018
Maureen Hall	Houston	TX	US	3/6/2018
Keith Rodney	Wilmington	VT	US	3/6/2018
Danielle DiLorenzo	Waltham	MA	US	3/6/2018
Elsie Rodney	Stow	MA	US	3/6/2018
Jane Belleville	Mendon	MA	US	3/6/2018
Judy Pitcher	San Diego	CA	US	3/6/2018
Edward Laurson	Denver	CO	US	3/6/2018
Helaine Prentice	Berkeley	CA	US	3/6/2018
Louisa Crawford	Brooklyn	NY	US	3/6/2018
Paul Bonnett	Brighton	MA	US	3/6/2018
Marta Todorovam	Secaucus	NJ	US	3/6/2018
Erin Lydon	Waltham	MA	US	3/6/2018
Kate Ford	Bedford	MA	US	3/6/2018
Carol Puk	Brooklyn	NY	US	3/6/2018
Sarah Lyon	Rutland	MA	US	3/6/2018
Erika Bourne	Waltham	MA	US	3/6/2018
Alex Ford	Philadelphia	PA	US	3/6/2018

Preserve Paine Estate Woods Petition

Signatures

March 5, 2018 to April 6, 2018

Roger Lawrence	Rutland	MA	US	3/6/2018
Stephen Middlebrook	Waltham	MA	US	3/6/2018
Joan Golden	Worcester	MA	US	3/6/2018
Robert Halpin	Natick	MA	US	3/6/2018
James Heumann	Cumberland	RI	US	3/7/2018
Mary Ann O'Sullivan	Boston	MA	US	3/7/2018
Elizabeth Lyon	Rome		Italy	3/7/2018
Kim Eustis	Melrose	MA	US	3/7/2018
Kara Allen	Plainville	MA	US	3/7/2018
Brian LaBau	Newton Center	MA	US	3/7/2018
Dawn Kenney	Waltham	MA	US	3/7/2018
Shannon Sweeney	Waltham	MA	US	3/7/2018
Karen Troy	Acton	MA	US	3/7/2018
robyn Sahleen	South Jordan	UT	US	3/7/2018
Carolyn Backus	Watertown	MA	US	3/7/2018
Steven Johnson	Tamworth	NH	US	3/8/2018
Nicole Johnson	North Attleboro	MA	US	3/8/2018
Michaela Kerns	waltham	MA	US	3/8/2018
Jonathan Boyne			US	3/8/2018
yasmel molina			US	3/8/2018
Jan Leonardy			US	3/8/2018
Brenda Hidlebaugh			US	3/8/2018
Xiao Deng			US	3/8/2018
Shelley Watson			US	3/8/2018
ashley leonard			US	3/8/2018
Amy Kosloski			US	3/8/2018
Debra Herman	Waltham	MA	US	3/8/2018
OLGA BITSAKIS	waltham	MA	US	3/8/2018
patricia fontes	Waltham	FL	US	3/8/2018
Jennifer kerr			US	3/8/2018
Bree nava			US	3/8/2018
Vera Valakh	Waltham	MA	US	3/8/2018
makayla champagne	Plainville	MA	US	3/8/2018
Jennifer Rose	Waltham	MA	US	3/8/2018
Hugh Wattenberg	West Roxbury	MA	US	3/8/2018
Marjie Alonso	Somerville	MA	US	3/8/2018
Dana Bucci			US	3/8/2018
Samantha Mchugh			US	3/8/2018
Ronnie Kolb			US	3/8/2018

Preserve Paine Estate Woods Petition

Signatures

March 5, 2018 to April 6, 2018

Renee Nolan			US	3/8/2018
Jane Champagne	Woonsocket	MA	US	3/8/2018
Michelle Remeny	Newton	MA	US	3/8/2018
Gay Sheldon	Somerville	MA	US	3/8/2018
Jim Mniece	Waltham	MA	US	3/8/2018
SUE KELMAN	Waltham	MA	US	3/8/2018
Marvin Kabakoff	Jamaica Plain	MA	US	3/9/2018
Lisa Levheim	South Hadley	MA	US	3/9/2018
ADELE LEVINE	St Louis	MO	US	3/9/2018
Jean Trainor	Fairbanks	AK	US	3/9/2018
Kirsten Pierson			US	3/9/2018
anne anderson	Hilo	HI	US	3/9/2018
Harmony Holm			US	3/9/2018
Jeremy Hirson-Sagalyn	Worcester	MA	US	3/9/2018
Kristen Bjork			US	3/9/2018
Alyson Arcand	Waltham	MA	US	3/9/2018
Debra Cash	Belmont	MA	US	3/9/2018
Laurie Dyche	St. Louis	MO	US	3/9/2018
Erin Radley	Waltham	MA	US	3/9/2018
Karen Grycel	Wilbraham	MA	US	3/9/2018
Linda Luna			US	3/9/2018
Rhonda Bourne	Waltham	MA	US	3/10/2018
Roberto Pineda	Waltham	MA	US	3/10/2018
Karen Moore			US	3/10/2018
Benny Malykin			US	3/10/2018
Kailee Putteet			US	3/10/2018
Keri Potter			US	3/10/2018
Adam Crossman	Greenville	SC	US	3/10/2018
Jeff z			US	3/10/2018
Holly Croslin			US	3/11/2018
Kelsey Rivera			US	3/11/2018
Rose Hernandez			US	3/11/2018
Rosemary Miller	Waltham	MA	US	3/11/2018
Cheryl LaFond-Lewis	New York	NY	US	3/11/2018
Amanda Miller	Waltham	MA	US	3/11/2018
karl gerds	Bonita Springs	FL	US	3/11/2018
Eric Olson	West Newton	MA	US	3/11/2018
Hilary Mastropaul	Newtonville	MA	US	3/11/2018
Lela Chiavaras	Waltham	MA	US	3/11/2018

Preserve Paine Estate Woods Petition

Signatures

March 5, 2018 to April 6, 2018

Susan Storer	Cincinnati	OH	US	3/11/2018
Claudia Clark	Waltham	MA	US	3/11/2018
Jean Nielsen Berry	Wellesley	MA	US	3/11/2018
D P	san mateo	CA	US	3/11/2018
cid tamagno	watertown	MA	US	3/11/2018
Karen Osborn	Boston	MA	US	3/11/2018
Jane Beal	Cambridge	MA	US	3/11/2018
Tom Durkin	Chicago	IL	US	3/11/2018
Elizabeth Paynter	Waltham	MA	US	3/11/2018
jessica decoteau			US	3/11/2018
Jen Jones			US	3/11/2018
stephanie Peron			US	3/11/2018
Broc Sutte			US	3/11/2018
Elijah Roberts			US	3/11/2018
Brandi Glenn			US	3/11/2018
Denise McConnell			US	3/11/2018
Hannah Lange	Mount Horeb	WI	US	3/11/2018
Shannon O'Brien			US	3/11/2018
Elizabeth Lally			US	3/11/2018
Ludeah Singh			US	3/11/2018
Candice Ruiz			US	3/11/2018
Jessica Falzone			US	3/11/2018
Noa Weiss			US	3/11/2018
APRIL TEMPLEMAN			US	3/11/2018
bonnie dunn			US	3/11/2018
Susan Peterson			US	3/11/2018
bianca conde			US	3/11/2018
Kortney Huntley			US	3/11/2018
Michael Rodrigues			US	3/11/2018
Amy Szeliga			US	3/11/2018
Dayna Jetmore			US	3/11/2018
Jenaya Hargrafen			US	3/11/2018
Cheryl Brown			US	3/11/2018
Kayla Plummer			US	3/11/2018
Angela Coffin			US	3/11/2018
Darlene Schenck			US	3/11/2018
Diane Shaughnessy-Moy	Waltham	MA	US	3/11/2018
MaryAnna Foskett	Arlington	MA	US	3/11/2018
Teresa Blagg	Somerville	MA	US	3/11/2018

Preserve Paine Estate Woods Petition

Signatures

March 5, 2018 to April 6, 2018

Fred Bamber	Cody	WY	US	3/11/2018
Caren Silverlieb	Belmont	MA	US	3/11/2018
Margaret Schadelbauer	Waltham	MA	US	3/11/2018
Olivia Nyhan	Brookline	MA	US	3/11/2018
Gayle MacDonald	Waltham	MA	US	3/11/2018
Benedict Sin	College Park	MD	US	3/11/2018
nancy allen	Medfield	MA	US	3/11/2018
Catherine Demetriadi	WHITHORN	SCT	UK	3/11/2018
Steve Pollock	5-11-24 shimomeguro, meguro	Japan		3/11/2018
John Dunton	796 Beaver St.	Wal MA	US	3/11/2018
Kristin Kladstrup	Watertown	MA	US	3/11/2018
David Kricker	Waltham	MA	US	3/11/2018
Holly Abnet	Waltham	MA	US	3/11/2018
darlene carpenter	Hingham, MA	MA	US	3/11/2018
Margaretha Eckhardt	Waltham	MA	US	3/11/2018
Cynthia DeSando	Haverhill	MA	US	3/11/2018
Jill Wilder	Waltham	MA	US	3/11/2018
John Saia	Malden	MA	US	3/11/2018
Michelle St. George-Coyle	Lakeville	MA	US	3/11/2018
Marilyn Maillet	Waltham	MA	US	3/11/2018
Miranda Davis			US	3/11/2018
Damaris Gonzalez			US	3/11/2018
Natasha Daly			US	3/11/2018
Richard Ross			US	3/11/2018
Melanie Parsons			US	3/11/2018
Marisa Duenas			US	3/11/2018
Steven Shalvey			US	3/11/2018
Beverly Faraj			US	3/11/2018
raquel dattoli			US	3/11/2018
kira schiff			US	3/11/2018
Ranjini Iyer			US	3/11/2018
Katalin Miklos			US	3/11/2018
Dalana Mammana			US	3/11/2018
MaryAnn Bomarito			US	3/11/2018
Charlene Bugnacki			US	3/11/2018
Nicole Garnett			US	3/11/2018
win johnson			US	3/11/2018
chrissy Alexander			US	3/11/2018
Paulette Bogert			US	3/11/2018

Preserve Paine Estate Woods Petition

Signatures

March 5, 2018 to April 6, 2018

Ben Arnold			US	3/11/2018
Chatelaine Achterberg			US	3/11/2018
Edward Vahlin			US	3/11/2018
Pamela D'Angio			US	3/11/2018
Bethany DeFelice			US	3/11/2018
Brenda Frew			US	3/11/2018
Anna Yeli Alcantara			US	3/11/2018
Keyana King			US	3/11/2018
Brittany Naquin			US	3/11/2018
Carol Rodriguez			US	3/11/2018
Sherry Goldberg			US	3/11/2018
Bethany Gidcumb			US	3/11/2018
Marcine McBride	West Babylon	NY	US	3/11/2018
Tiffany Mata			US	3/11/2018
Sophia Mathenia			US	3/11/2018
David lizotte			US	3/11/2018
Brandy Hazlett			US	3/11/2018
Jamie Vermeersch			US	3/11/2018
nuria carrasco			US	3/11/2018
Ashley Eldred			US	3/11/2018
Marian Holt			US	3/11/2018
Suzanne Casterlin			US	3/11/2018
Michael Rodbourn			US	3/11/2018
Catherine Traynor			US	3/11/2018
Kristin Petersen			US	3/11/2018
Vivian Melissa Berrios			US	3/11/2018
Hope Priessnitz			US	3/11/2018
Mary Bante			US	3/11/2018
Brandi Kimbrough			US	3/11/2018
Anjali Sharma-Moghe			US	3/11/2018
Michelle BENSON			US	3/11/2018
Sally Tippetts			US	3/11/2018
Brooke Emrick			US	3/11/2018
Charlene McLaughlin			US	3/11/2018
Nereyda Garcia			US	3/11/2018
Mark Herron			US	3/11/2018
Alexa L.			US	3/11/2018
Amelina Taylor			US	3/11/2018
Laurel Kastner			US	3/11/2018

Preserve Paine Estate Woods Petition

Signatures

March 5, 2018 to April 6, 2018

Andrea Franco	US	3/11/2018
James R. & Katherine Darlene Bardsley	US	3/11/2018
Lori Kaiser	US	3/11/2018
Gretchen Deresz	US	3/11/2018
carol hankins	US	3/11/2018
Summer Schnabel	US	3/11/2018
Emily Merriott	US	3/11/2018
George Borghese	US	3/11/2018
Stan Zborovski	US	3/11/2018
Josephine Palladino	US	3/11/2018
Rashida Tewarson	US	3/11/2018
Dawn Merrill	US	3/11/2018
De Van	US	3/11/2018
Libby Traylor	US	3/11/2018
Matias Rodriguez	US	3/11/2018
Nancy Gilleo	US	3/11/2018
Timothy Miller	US	3/11/2018
Richard Ashley	US	3/11/2018
Kristen Sealy	US	3/11/2018
James Mccoy	US	3/11/2018
Heather Parks	US	3/11/2018
Howie Tilford	US	3/11/2018
Qian Wang	US	3/11/2018
John D'Amico	US	3/11/2018
Tammy Timms	US	3/11/2018
Gert Klimanschewski	US	3/11/2018
Ryan Hodgson	US	3/11/2018
Elizabeth Wagner	US	3/11/2018
jeffery dolph	US	3/11/2018
Richard Murch	US	3/11/2018
Trudy Brosius	US	3/11/2018
Stacy Lee	US	3/11/2018
Kristen Lang	US	3/11/2018
Laura Knight	US	3/11/2018
Abbey Bricker	US	3/11/2018
Clarissa H	US	3/11/2018
Keeley Rush	US	3/11/2018
Caroline Lee	US	3/11/2018
Edgardo Rivera	US	3/11/2018

Preserve Paine Estate Woods Petition

Signatures

March 5, 2018 to April 6, 2018

Karen Thornton			US	3/11/2018
Jessica Kimmet			US	3/11/2018
Carlle brooks			US	3/11/2018
Liz Bezore			US	3/11/2018
Jenna Casper			US	3/11/2018
Katie Phelan			US	3/11/2018
diane johnston			US	3/11/2018
A Joseph			US	3/11/2018
Donicka Warner			US	3/11/2018
Persephone Dorrian	Grandville	MI	US	3/11/2018
Sharon Powell			US	3/11/2018
norm reece			US	3/11/2018
Melanie Spenard	Carver	MA	US	3/11/2018
Katherine McGough			US	3/11/2018
Jeffrey Petrilla			US	3/11/2018
Joseph Hughes			US	3/11/2018
T D			US	3/11/2018
Christine Boynton	Waltham	MA	US	3/11/2018
Antonieta Costa	New Bedford	MA	US	3/11/2018
Ellie Smerlas	Waltham	MA	US	3/11/2018
Lea Lovell			US	3/11/2018
kiara turner			US	3/11/2018
Diana Ferrell			US	3/11/2018
lori bengtson			US	3/11/2018
george vazquez			US	3/11/2018
Cathy Stephens			US	3/11/2018
Shabee Ehtesham			US	3/11/2018
Christina Trimarco			US	3/11/2018
Erin Homan			US	3/11/2018
Brandon Adams			US	3/11/2018
Selena Perez			US	3/11/2018
Amelinda DeLeon			US	3/11/2018
Debra Miller			US	3/11/2018
michelle cohen			US	3/11/2018
Thomas Hebert			US	3/11/2018
Janice Thompson			US	3/11/2018
Alexandria Robinson			US	3/11/2018
Margaret Paul			US	3/11/2018
Linda Fore			US	3/11/2018

Preserve Paine Estate Woods Petition

Signatures

March 5, 2018 to April 6, 2018

Sean Cortright	US	3/11/2018
Lina Utrera	US	3/11/2018
Chad Oney	US	3/11/2018
Paris Morales	US	3/11/2018
Saunsiaray Broussard	US	3/11/2018
Landy Balan	US	3/11/2018
Lissandra Clark	US	3/11/2018
Mary Martin	US	3/11/2018
srinivasan iyengar	US	3/11/2018
Judy Miller	US	3/11/2018
Nancy Orellana	US	3/11/2018
Destinee Smith	US	3/11/2018
cathy tonarelli	US	3/11/2018
catherine caza	US	3/11/2018
Madeleidys Del Toro	US	3/11/2018
Camie Rodgers	US	3/11/2018
Elizabeth Turner	US	3/11/2018
Danny Boy	US	3/11/2018
Julie LaGuardia	US	3/11/2018
CHELSEA PRIES	US	3/11/2018
Lucy Roth	US	3/11/2018
Cheryl Younghans	US	3/11/2018
Kathleen michael	US	3/11/2018
patti kelly	US	3/11/2018
Breanna Pawlik	US	3/11/2018
a deasey	US	3/11/2018
brigitte perreault	US	3/11/2018
Bruce Coole	US	3/11/2018
Martha FloresRangel	US	3/11/2018
Rebecca Muller	US	3/11/2018
Cheryl Hartnett	US	3/11/2018
Jacob Power	US	3/11/2018
Emma Guillot	US	3/11/2018
Dale Haw	US	3/11/2018
Esteban Detres	US	3/11/2018
Jill Ayers	US	3/11/2018
Jonathan Papazian	US	3/11/2018
Kelly Logan	US	3/11/2018
angela vazquez	US	3/11/2018

Preserve Paine Estate Woods Petition

Signatures

March 5, 2018 to April 6, 2018

Silver Hart			US	3/11/2018
Sonal Arora			US	3/11/2018
Carla Travelute	Abilene	KS	US	3/11/2018
Byron Jackson			US	3/11/2018
Sharon Sandusky			US	3/11/2018
Erica Olson			US	3/11/2018
Nina Jackson			US	3/11/2018
Debbie Holt			US	3/11/2018
Morgan Weigle			US	3/11/2018
Carla Lewiston			US	3/11/2018
Leslie King			US	3/11/2018
Merly Dinarte			US	3/11/2018
Wendy Villalba			US	3/11/2018
Jenda Cipperley			US	3/11/2018
Paula Damasceno-Furchak			US	3/11/2018
Cerease Travis			US	3/11/2018
Cole Conigliaro			US	3/11/2018
Amy Lauter Rickel			US	3/11/2018
Coleen Paradissis			US	3/11/2018
Joan Cleary			US	3/11/2018
Vanessa Rodriguez			US	3/11/2018
Chelsea sheaffer			US	3/11/2018
Eric Schertler			US	3/11/2018
Hanif Ramdon			US	3/11/2018
Melissa Carter			US	3/11/2018
Chris B Franson			US	3/11/2018
Dowling Lugardo			US	3/11/2018
Dale Kaufman			US	3/11/2018
Sofia Castiblanco			US	3/11/2018
Dee Kricker	Waltham	MA	US	3/11/2018
Doug Russell			US	3/11/2018
Audrey Bratton			US	3/11/2018
Tiffany Boeglen			US	3/11/2018
Monica Ryan			US	3/11/2018
Carmen Reeder			US	3/11/2018
Joe Paul			US	3/11/2018
Javier Hernandez			US	3/11/2018
Brooke Lampron			US	3/11/2018
Monica Diaz-Granados			US	3/11/2018

Preserve Paine Estate Woods Petition

Signatures

March 5, 2018 to April 6, 2018

Stefan Ciosici			US	3/11/2018
Shelia Loffis			US	3/11/2018
Jon Wesslen			US	3/11/2018
Tania Helhoski			US	3/11/2018
Yinely Brisita			US	3/11/2018
Maria Venus			US	3/11/2018
bob san			US	3/11/2018
Kristy Rubino			US	3/11/2018
Valynn Steward			US	3/11/2018
Maria Garcia			US	3/11/2018
Bailey Tweedy			US	3/11/2018
Nola LaRose			US	3/11/2018
Kristallie rafael			US	3/11/2018
saudia faulkner			US	3/11/2018
Christine McFadden			US	3/11/2018
Kristin O.			US	3/11/2018
Riley Browne			US	3/11/2018
Denise G.			US	3/11/2018
Gerry Wright	Boston	MA	US	3/11/2018
John Keefe	Waltham	MA	US	3/11/2018
Lisa Dady	Providence	RI	US	3/11/2018
Rosemary St. George	Brookline	MA	US	3/11/2018
marilee meyer	cambridge	MA	US	3/11/2018
Josh Bryce	Rockville	MD	US	3/11/2018
Jennifer Meader	Brookline	MA	US	3/11/2018
BRIAN WILLIS			US	3/11/2018
George Bryant	Philadelphia	PA	US	3/11/2018
chrissie wheatman			US	3/11/2018
ashlynn lowe			US	3/11/2018
Ashley Slaughter			US	3/11/2018
Vicky Spice			US	3/11/2018
Elena Spinei			US	3/11/2018
Heather Robbins			US	3/11/2018
Georgios Vlahoylis			US	3/11/2018
Irina Lev			US	3/11/2018
Tiffany Bowman			US	3/11/2018
Elizabeth Aberle			US	3/11/2018
Crystal Tyson			US	3/11/2018
Denene Furness			US	3/11/2018

Preserve Paine Estate Woods Petition

Signatures

March 5, 2018 to April 6, 2018

Lindsay Chapman			US	3/11/2018
Tara Eggleston			US	3/11/2018
Marilyn Elliott			US	3/11/2018
Meredith Everett			US	3/11/2018
Marty villa			US	3/11/2018
Melinda Culbreath			US	3/11/2018
Jennifer Geiter			US	3/11/2018
Caitlin Lamb			US	3/11/2018
Tony Lentini			US	3/11/2018
Aria Potter			US	3/11/2018
Brian Nielsen			US	3/11/2018
Jilayne Gouvion			US	3/11/2018
Jen Johnson			US	3/11/2018
Sherry Janetzke			US	3/11/2018
Eusebio Gonzalez			US	3/11/2018
Lisa Romdall			US	3/11/2018
Karin Bergman			US	3/11/2018
eunice nicolella			US	3/11/2018
David Zaita			US	3/11/2018
Ben Lewandowski			US	3/11/2018
Gayle Hertik			US	3/11/2018
Evalyn Angelis			US	3/11/2018
jacqueline feldman			US	3/11/2018
Sheeraja Altizer			US	3/11/2018
william schmeelcke			US	3/11/2018
Judy Yeager			US	3/11/2018
liz fergus			US	3/11/2018
Dan Racz			US	3/11/2018
Alyssa Simmons			US	3/11/2018
Anna Perez			US	3/11/2018
Pamela Robichaux			US	3/11/2018
Emily Whipp			US	3/11/2018
maureen mcdonald			US	3/11/2018
John depierro			US	3/11/2018
Donna Freedman	Natick	MA	US	3/11/2018
Kristy L Altman			US	3/11/2018
Malaree Frost			US	3/11/2018
Justin Springfield			US	3/11/2018
john Alper			US	3/11/2018

Preserve Paine Estate Woods Petition

Signatures

March 5, 2018 to April 6, 2018

Alvin Hoyt			US	3/11/2018
Angela Wolters			US	3/11/2018
Ariel Jordan			US	3/11/2018
Cynthia Munyon			US	3/11/2018
Joe Matta			US	3/11/2018
Jean Yanos			US	3/11/2018
Julie Gunter			US	3/11/2018
Luis Garcia	Jefferson	MD	US	3/11/2018
Michelle Skinner			US	3/11/2018
Kristi Kattapong			US	3/11/2018
Megan VonAchen			US	3/11/2018
Valerie Ramos			US	3/11/2018
Rona Brandell			US	3/11/2018
kira diehl			US	3/11/2018
Craig Fullerton	Jeddah		Saudi Arab	3/11/2018
Patrice Smith			US	3/11/2018
Maria Martinez			US	3/11/2018
julia feld			US	3/11/2018
Kai Houlihan			US	3/11/2018
Karen Rellinger			US	3/11/2018
paula rauchman			US	3/11/2018
Hannah Gonzalez			US	3/11/2018
Arash pars			US	3/11/2018
Mayelly Orozco			US	3/11/2018
Barbara Dally			US	3/11/2018
Ryan Courtney			US	3/11/2018
LOUISE SIMONS			US	3/11/2018
REYNALDO JIMENEZ			US	3/11/2018
Isabelle Menozzi			US	3/11/2018
Kristie Meeks			US	3/11/2018
Cassandra Barron			US	3/11/2018
Jeff DeCristo			US	3/11/2018
ozlem yardimci			US	3/11/2018
Jordan Levasseur			US	3/11/2018
Melisa Henley			US	3/11/2018
Marie Bamber			US	3/11/2018
Mary Larivee	Belleville	MI	US	3/11/2018
Jordyn Aldrich			US	3/11/2018
Jeffrey Kushner	Brookline	MA	US	3/11/2018

Preserve Paine Estate Woods Petition

Signatures

March 5, 2018 to April 6, 2018

Philip Moser	Waltham	MA	US	3/11/2018
Nina Schultz	Waltham		US	3/11/2018
Bruce Meyer	ORANGE	NJ	US	3/11/2018
Robert D Mussey Jr	Milton	MA	US	3/11/2018
Paula Handloff	Naples	FL	US	3/11/2018
Lynne Davis	Waltham	MA	US	3/11/2018
John Arbuckle	New York	NY	US	3/11/2018
Samantha Faherty	Carver	MA	US	3/11/2018
Deborah Mcdowell	Waltham	MA	US	3/11/2018
Mithu Lahiri	Jamaica Plain	MA	US	3/11/2018
Carla Bianchi			US	3/11/2018
Lisa Krumm			US	3/11/2018
Kateri Lilgreen			US	3/11/2018
Regina Brooks			US	3/11/2018
Ellie Cornell			US	3/11/2018
Cpl Donna MacQueen			US	3/11/2018
Denise Kiedis			US	3/11/2018
Nicole Hahn			US	3/11/2018
Dawn Coupe			US	3/11/2018
Helen Chambers			US	3/11/2018
Rhiannon Archer			US	3/11/2018
Mark Leavitt			US	3/11/2018
Nile Arena			US	3/11/2018
Beverly Isaacson			US	3/11/2018
Francesca Azuremare			US	3/11/2018
lisa zudis			US	3/11/2018
Emma Rollo			US	3/11/2018
Eullalee Hanson			US	3/11/2018
Karen Smith			US	3/11/2018
Oscar Campana			US	3/11/2018
Alair Gaudet			US	3/11/2018
Jayde Makris			US	3/11/2018
Jean Stephens			US	3/11/2018
Christina Flatley			US	3/11/2018
RONDA BRATTON			US	3/11/2018
Catherine Stolzman			US	3/11/2018
Aloma Gregory			US	3/11/2018
Colby Church			US	3/11/2018
Emily Rotolo			US	3/11/2018

Preserve Paine Estate Woods Petition

Signatures

March 5, 2018 to April 6, 2018

James Cieloha			US	3/11/2018
Alma Moreno			US	3/11/2018
Anne Atkinson			US	3/11/2018
amber maxwell			US	3/11/2018
Kathy Ligus			US	3/11/2018
Elizabeth Merrick	Somerville	MA	US	3/11/2018
Sean McDonald			US	3/11/2018
Bob Lichtenbert			US	3/11/2018
Mark Coontz			US	3/11/2018
Jacqueline Hernandez			US	3/11/2018
Lena Monich			US	3/11/2018
Quentin Barclay			US	3/11/2018
Amy Fritschka			US	3/11/2018
Ivalee Kamalu			US	3/11/2018
clairun thealwy			US	3/11/2018
Kim Stoddard			US	3/11/2018
Miriam Vallarino			US	3/11/2018
Theodora Iancu			US	3/11/2018
Evan Blum			US	3/11/2018
Susan McDavid			US	3/11/2018
Theresa Hicks			US	3/11/2018
Sarah DiDomenico			US	3/11/2018
Diana Carmenates			US	3/11/2018
Silmi Maredia			US	3/11/2018
Linda Kirschner			US	3/11/2018
lisa letendre			US	3/11/2018
Jacqueline Mckeown			US	3/11/2018
Molly Kelly			US	3/11/2018
Corey Cooke			US	3/11/2018
Keara Ziegerer			US	3/11/2018
Cat White			US	3/11/2018
Alexis Faith			US	3/11/2018
Corinna Cruz			US	3/11/2018
Stephanie Dotten			US	3/11/2018
Annie Zimmerman			US	3/11/2018
blake getchel			US	3/11/2018
Kathleen Handcock			US	3/11/2018
Trevor Stoops	Athens	TN	US	3/11/2018
Amy Pytlovany			US	3/11/2018

Preserve Paine Estate Woods Petition

Signatures

March 5, 2018 to April 6, 2018

Ryan Pfiester	Schaumburg	IL	US	3/11/2018
Loretta Simon			US	3/11/2018
Christine Lucarelli			US	3/11/2018
Lisa Cleveland			US	3/11/2018
Amanda Reis			US	3/11/2018
James Zemanek			US	3/11/2018
Autumn Collins			US	3/11/2018
Phi Van			US	3/11/2018
Shirley Ragland			US	3/11/2018
Sandra Sydor			US	3/11/2018
Court Olinger			US	3/11/2018
Julie Magyar			US	3/11/2018
Rachel Lewis			US	3/11/2018
Amanda White			US	3/11/2018
Diana Haynes			US	3/11/2018
Nancy Wellington			US	3/11/2018
Shelah Corey			US	3/11/2018
kenneth rohm			US	3/11/2018
Cassandra Williamson			US	3/11/2018
Vincent Martin			US	3/11/2018
Kim Smith			US	3/11/2018
chuck watt			US	3/11/2018
Leonor Fuster			US	3/11/2018
Penny Olien			US	3/11/2018
Sarah Hiler			US	3/11/2018
Paul Wakeford	Flagstaff	AZ	US	3/11/2018
Elvira Perez	Brookline	MA	US	3/11/2018
N Locher	Lexington	MA	US	3/11/2018
Heather Mcburney	Boston	MA	US	3/11/2018
Veronica Serrato			US	3/11/2018
Shiloh Enriquez	Falls Church	VA	US	3/11/2018
Eileen McAuley	Scituate	MA	US	3/11/2018
Theresa Amby			US	3/11/2018
Jenna Ostroff			US	3/11/2018
Ethan Prickett			US	3/11/2018
Pablo D. C.	Salt Lake City	UT	US	3/11/2018
Paige Hagenbuch			US	3/11/2018
Zach Toledo			US	3/11/2018
Jaime Ciaccia			US	3/11/2018

Preserve Paine Estate Woods Petition

Signatures

March 5, 2018 to April 6, 2018

Lisa Conger	Cortland	NY	US	3/11/2018
Gatha Pierucki			US	3/11/2018
Kelly Adams			US	3/11/2018
George Cornwell			US	3/11/2018
Patty Sbarbaro			US	3/11/2018
Frank Astashkevich			US	3/11/2018
Peggy Yeung			US	3/11/2018
Holly Owens			US	3/11/2018
Haley Benner			US	3/11/2018
Whitney Irwin			US	3/11/2018
David Bechtel			US	3/11/2018
Joy Miyatake			US	3/11/2018
krishna dyehouse			US	3/11/2018
Stephanie Jean			US	3/11/2018
Danielle Healy			US	3/11/2018
Trey Arms			US	3/11/2018
J Harris			US	3/11/2018
Chris H			US	3/11/2018
Lizbeth Velez			US	3/11/2018
Catherine Johnson Tully			US	3/11/2018
Diane Young	Scio	OR	US	3/11/2018
cheryl weinert			US	3/11/2018
Luz Alvarado			US	3/11/2018
Jill Seaman			US	3/11/2018
Amanda Krause			US	3/11/2018
Heidi Chapman			US	3/11/2018
Sandra burleson			US	3/11/2018
Hanna Liriani			US	3/11/2018
Jennifer White			US	3/11/2018
Tom Guiendon		AL	US	3/11/2018
Rebeccah Rivera			US	3/11/2018
Charlotte Wintersteen			US	3/11/2018
Gracie Levingston			US	3/11/2018
cristo sanchez			US	3/11/2018
Kelli Hall			US	3/11/2018
Jewell Robertson			US	3/11/2018
Elsie Nelsen			US	3/11/2018
Kathy Santoro			US	3/11/2018
YESENIA TORRES			US	3/11/2018

Preserve Paine Estate Woods Petition

Signatures

March 5, 2018 to April 6, 2018

Pixie Ruth			US	3/11/2018
Tami Torossian			US	3/11/2018
Ryan Pratt			US	3/11/2018
Richard Carnathan			US	3/11/2018
John Ajwani			US	3/11/2018
Douglas Hormann			US	3/11/2018
Leslie ackerman			US	3/11/2018
Mion Sonozaki			US	3/11/2018
Tony Rodriguez			US	3/11/2018
Lily Sommer			US	3/11/2018
Joelle Szendel			US	3/11/2018
Neysa Rodríguez			US	3/11/2018
Carla Rodriguez			US	3/11/2018
Pat Pendleton			US	3/11/2018
Katelyn Rea			US	3/11/2018
Crystal Turner			US	3/11/2018
Sarah Motta			US	3/11/2018
angela arrigo			US	3/11/2018
Deborah Locke			US	3/11/2018
Julia Fetty			US	3/11/2018
Steven Ramar			US	3/11/2018
Yan Segal			US	3/11/2018
Jacqueline Fesler	Waltham	MA	US	3/11/2018
Maria Helena Leite Borges	Rio de Janeiro		Brazil	3/11/2018
Nancy Chiacchio	Boston	MA	US	3/11/2018
Jack Glassman	Brookline	MA	US	3/11/2018
Anthony Sammarco	Boston	MA	US	3/11/2018
Mark Wasnock	Waltham	MA	US	3/11/2018
Clara Hanak	Rockland	MA	US	3/11/2018
Robert Chiacchio	Boston	MA	US	3/11/2018
Lisa ahern	Dorchester Center	MA	US	3/11/2018
Joel Andreasen	Quincy	MA	US	3/11/2018
Linda Mayer	Acton	MA	US	3/11/2018
Brian Boyanowski			US	3/11/2018
Starr Goode			US	3/11/2018
Sheila Monks	Milton	MA	US	3/11/2018
Alexandra Schild			US	3/11/2018
Phillip Waldron			US	3/11/2018
Mark Dody			US	3/11/2018

Preserve Paine Estate Woods Petition

Signatures

March 5, 2018 to April 6, 2018

Irene Lutz			US	3/11/2018
hieu pham			US	3/11/2018
Estelle Perod			US	3/11/2018
Sabine Lodl			US	3/11/2018
James May			US	3/11/2018
Joey Jojo			US	3/11/2018
Reese Snyder			US	3/11/2018
Phaedra Reed			US	3/11/2018
Kris Olson			US	3/11/2018
Michael Chavez			US	3/11/2018
Michelle Molenkamp			US	3/11/2018
Maria Alderton			US	3/11/2018
Hunter Ott			US	3/11/2018
Sarah Hachey			US	3/11/2018
Luis Pena			US	3/11/2018
Nate Strothkamp			US	3/11/2018
Ivana Arroyo			US	3/11/2018
Marielle Marne	Phoenix	AZ	US	3/11/2018
Dorothy Collins			US	3/11/2018
Samantha McAllister			US	3/11/2018
garyt hyson			US	3/11/2018
Danny Tyler			US	3/11/2018
daniel roy			US	3/11/2018
Natalie Lopez			US	3/11/2018
Anisa Ray			US	3/11/2018
angelina alford			US	3/11/2018
Erad Argov			US	3/11/2018
Patricia Regan			US	3/11/2018
Ashley Vaughn			US	3/11/2018
Alec Tolmazin			US	3/11/2018
jackson vanhille			US	3/11/2018
Alisa Vartovsky			US	3/11/2018
Alejandro Ley			US	3/11/2018
Pauline Baizet			US	3/11/2018
Sarah Kuehne			US	3/11/2018
Stacey Grelli			US	3/11/2018
Robert Applegate	Milton	MA	US	3/11/2018
Leslie Lehmann	Brighton	MA	US	3/11/2018
Christopher Curtis	Temperance	MI	US	3/11/2018

Preserve Paine Estate Woods Petition

Signatures

March 5, 2018 to April 6, 2018

Louis Flanagan			US	3/11/2018
Cynthia D. Payne	Williamstown	MA	US	3/11/2018
Carol Ferraro	Attleboro	MA	US	3/11/2018
Mason Cook	725 Old plymouth st	MA	US	3/11/2018
Ellen Thompson	Quincy	MA	US	3/11/2018
Beth Zonis	Lexington	MA	US	3/11/2018
Bartholomew Folan	South Weymouth		US	3/11/2018
Ronald Israel	Milton	MA	US	3/11/2018
Helen Mayer	Los Angeles	CA	US	3/11/2018
Susan Adams	Brookline	MA	US	3/11/2018
francis bennett	Waltham	MA	US	3/11/2018
Gerri Powers	Waltham	MA	US	3/11/2018
Thomas Lincoln	Medford	MA	US	3/11/2018
Jennifer McAnarney	Springfield	IL	US	3/11/2018
Leda Zimmerman	Lexington	MA	US	3/11/2018
Chawnie yette			US	3/11/2018
holly mchale			US	3/11/2018
Mitchell J.D. Swift			US	3/11/2018
Paula Hinchliffe	Chelmsford	MA	US	3/11/2018
Dennis Coughlin	Quincy	MA	US	3/11/2018
Fernando Moreira			US	3/11/2018
Peter Kingman	Brighton	MA	US	3/11/2018
Richard Volpicelli	Bedford	MA	US	3/11/2018
Elaine Barr	Bedford	MA	US	3/11/2018
Greg Kahler	Chelsea	MA	US	3/11/2018
Louise Russell	Waltham	MA	US	3/11/2018
Veena Nair	Lexington	MA	US	3/11/2018
deborah macneill	fithchburg	MA	US	3/11/2018
Clara Piloto	Cambridge	MA	US	3/11/2018
Jeanne R Ryan	Braintree	MA	US	3/11/2018
Maureen Meister	Winchester	MA	US	3/12/2018
Mary Markis	Chicago	IL	US	3/12/2018
Trudi Goodman	Cambridge	MA	US	3/12/2018
Christopher Barnett	Lexington	MA	US	3/12/2018
Lysa Wilkins	Roslindale	MA	US	3/12/2018
Colleen Oloughlin	Hubbardston	MA	US	3/12/2018
Joan Faulkner	Milton	MA	US	3/12/2018
Michael Rubenstein	Brookline	MA	US	3/12/2018
Suilin Yap	Boston	MA	US	3/12/2018

Preserve Paine Estate Woods Petition

Signatures

March 5, 2018 to April 6, 2018

Joanne Zbinski	Needham	MA	US	3/12/2018
Joe Stotler			US	3/12/2018
Tajah Downey	Dorchester	MA	US	3/12/2018
Mike Foster			US	3/12/2018
Leslie Feeney	Marlborough	MA	US	3/12/2018
Patsy Sullivan	Milton	MA	US	3/12/2018
Janew Petro	Saint Petersburg	FL	US	3/12/2018
James M Williamson	Cambridge	MA	US	3/12/2018
Roger Conrad	Springfield	VA	US	3/12/2018
Martha Simon	Burlington	MA	US	3/12/2018
Felipe Pait	S Paulo		Brazil	3/12/2018
Elisse Ghitelman	Waltham	MA	US	3/12/2018
Jeff Treistman	Seattle	WA	US	3/12/2018
Wendy Klein	Denver	CO	US	3/12/2018
Ericka Jacobsen	Quincy	MA	US	3/12/2018
Joan Murray	Port Charlotte	FL	US	3/12/2018
sandy lach	framingham	MA	US	3/12/2018
Vivian Tanner	Waltham	MA	US	3/12/2018
Shawn Mulanix	Seattle	WA	US	3/12/2018
Maeve Lien	Arlington	MA	US	3/12/2018
Gloria Champion	Waltham	MA	US	3/12/2018
Janet Garabedian	Billerica	MA	US	3/12/2018
Bethany Block		217 MA	US	3/12/2018
Althea Angel	Canton	MA	US	3/12/2018
K Fraser	Greater boston	MA	US	3/12/2018
Yasiu Kruszynski	Chicago	IL	US	3/12/2018
GAIL SPAULDING	HANCOCK	MA	US	3/12/2018
Maria Moskos	High Falls	NY	US	3/12/2018
Elaine Becker	Roanoke	VA	US	3/12/2018
Ellyn Wolfe	Winchester	CA	US	3/12/2018
Andy Symmes	Greensboro	NC	US	3/12/2018
Susan Schukart	Clarion	PA	US	3/12/2018
Jenny Roberts	Newtonville	MA	US	3/12/2018
Linda Lengyel	Cambridge	MA	US	3/12/2018
Dee Morris	Medford	MA	US	3/12/2018
patricia medina	salem	MA	US	3/12/2018
Peter Robertson	WATERTOWN	MA	US	3/12/2018
Connie Brown	Secaucus	NJ	US	3/12/2018
Joseph Keefe	Waltham	MA	US	3/12/2018

Preserve Paine Estate Woods Petition

Signatures

March 5, 2018 to April 6, 2018

Milda Richardson	Boston	MA	US	3/12/2018
Nancy Lambrechts	Boston	MA	US	3/12/2018
Paul Gumbleton	Provincetown	MA	US	3/12/2018
Cathy Stern	Canton	MA	US	3/12/2018
gary younker	Waltham	MA	US	3/12/2018
Roderick Hall	Temecula	CA	US	3/12/2018
tom sherman	mil wis	AL	US	3/12/2018
Richard Frost	Waltham	MA	US	3/12/2018
Michele Smith	Burlington	MA	US	3/12/2018
Tina Goldsmith	Cambridge	MA	US	3/12/2018
Thomas O'Rourke	LEXINGTON	MA	US	3/12/2018
Kyle Janezic	Waltham	MA	US	3/12/2018
Geoffrey Keith	Lexington	MA	US	3/12/2018
Susan Foster	Lexington	MA	US	3/12/2018
Eve Baltzell	Berwick	ME	US	3/12/2018
Louise Zonis	San Francisco	CA	US	3/12/2018
Elizabeth Bailey	Bedford Hills	NY	US	3/12/2018
Elizabeth Rock	San Francisco	CA	US	3/12/2018
Fred Bailey	Bedford Hills	NY	US	3/12/2018
Janet Buda	Boston	MA	US	3/12/2018
Joelle Schnaider	San Francisco	CA	US	3/12/2018
Ellen Basius	Dorchester	MA	US	3/12/2018
Robert Michaelson	Evanston	IL	US	3/12/2018
William Tyre	Chicago	IL	US	3/12/2018
Amy Cole	Chicago	IL	US	3/12/2018
Thomas Fabian			US	3/12/2018
Sarah Boza			US	3/12/2018
Sylvia Santos			US	3/12/2018
Steven Witkowski			US	3/12/2018
Asry Tura			US	3/12/2018
Amy Meeks			US	3/12/2018
Caitlin Hayes			US	3/12/2018
Christine Bowers			US	3/12/2018
Anthont Peroni			US	3/12/2018
steve striegel			US	3/12/2018
judith crouch			US	3/12/2018
Laura Wolfe			US	3/12/2018
Marjory Cole			US	3/12/2018
curtis smith			US	3/12/2018

Preserve Paine Estate Woods Petition

Signatures

March 5, 2018 to April 6, 2018

Brandi Hall			US	3/12/2018
LaKisha Jones			US	3/12/2018
Louise Clendenen			US	3/12/2018
Dana Thompson			US	3/12/2018
Matthew Alzugaray			US	3/12/2018
alicia joan			US	3/12/2018
Grace Martin			US	3/12/2018
Lady Jane Briones			US	3/12/2018
Megan Wilson	Chico	CA	US	3/12/2018
Jennifer Villa			US	3/12/2018
Debbie Stinehart			US	3/12/2018
Danielle Melchor			US	3/12/2018
Lyanne Fernandez			US	3/12/2018
Haley Shinn			US	3/12/2018
Piroja Montgomery			US	3/12/2018
toni Gaston			US	3/12/2018
Ruby Zamudio			US	3/12/2018
Karla Saenz			US	3/12/2018
Danielle Simonovic			US	3/12/2018
Jennifer Kosal			US	3/12/2018
Kumail Naqvi			US	3/12/2018
Miriam Soto			US	3/12/2018
Shonte Bryson			US	3/12/2018
Maureen Johnston			US	3/12/2018
Jason Yeagle			US	3/12/2018
Ruby St Juste			US	3/12/2018
Lynda Johansen			US	3/12/2018
John Hernandez			US	3/12/2018
Anthony George			US	3/12/2018
terri pigford	Dayton	OH	US	3/12/2018
Judith Spurgin	Chicago	IL	US	3/12/2018
kerri pfaff			US	3/12/2018
Vicky Oiler			US	3/12/2018
Kevin Paxton			US	3/12/2018
Mike Greenly	New York	NY	US	3/12/2018
Lizette Loss			US	3/12/2018
Maria Cerda			US	3/12/2018
Timothy Murrell			US	3/12/2018
Yalile Garcia			US	3/12/2018

Preserve Paine Estate Woods Petition

Signatures

March 5, 2018 to April 6, 2018

KAY YOUNG	Chicago	IL	US	3/12/2018
Stuart Miller	Chicago	IL	US	3/12/2018
sandra lee	Chicago	IL	US	3/12/2018
Anthony Buda	Boston	MA	US	3/12/2018
John Hug	Chicago	IL	US	3/12/2018
Leslie Leon	Sudbury	MA	US	3/12/2018
Carman Dewees	Waltham	MA	US	3/12/2018
Barbara badger	Chicago	IL	US	3/12/2018
Andrea Salvin	Clinton	CT	US	3/12/2018
Linda Clower	Burlington	MA	US	3/12/2018
Wendy Drexler	Belmont	MA	US	3/12/2018
Paul Goon	Raeferd	NC	US	3/12/2018
Ellen Hammond	Chapel Hill	NC	US	3/12/2018
Robert Allison	Boston	MA	US	3/12/2018
Malcolm Buxton	Jefferson City	MO	US	3/12/2018
Emery Kronemeyer			US	3/12/2018
Andrea Moran	Dedham	MA	US	3/12/2018
Gary Thaler			US	3/12/2018
Andrea Kreitman	Boston	MA	US	3/12/2018
trista jimenez			US	3/12/2018
Maria Torres			US	3/12/2018
Kathryn Woods	Boston	MA	US	3/12/2018
Peggy Sudberry	Burke	VA	US	3/12/2018
Celeste Walker	Boston	MA	US	3/12/2018
Thomas Dolphin	Sharon	MA	US	3/13/2018
Shreya Kaveti			US	3/13/2018
Ellie Putnam	Urbana	IL	US	3/13/2018
Kathy Pak			US	3/13/2018
Allan Vagner	Chicago	IL	US	3/13/2018
Annette Banchemo			US	3/13/2018
Sierra Vigneron			US	3/13/2018
Valerie Claff	Chesterfield	MA	US	3/13/2018
James Johnson	Framingham	MA	US	3/13/2018
Miriam Carson	Wilkes Barre	PA	US	3/13/2018
Connemara Wadsworth	Newton	MA	US	3/13/2018
Elaine Soffer	Fort Myers	FL	US	3/13/2018
Madisen Showers			US	3/13/2018
Shane Trout			US	3/13/2018
Veronica Diercks			US	3/13/2018

Preserve Paine Estate Woods Petition

Signatures

March 5, 2018 to April 6, 2018

AJ Ardon			US	3/13/2018
Ally Black			US	3/13/2018
Rosemary Dewees	Waltham	MA	US	3/13/2018
Kristine Neff			US	3/13/2018
Maiysha Wimmer			US	3/13/2018
uma pooran			US	3/13/2018
RedElisa Mendoza	Miami	FL	US	3/13/2018
Antoinette C. Gonzales			US	3/13/2018
Sajid Manzoor			US	3/13/2018
Lori Siensa			US	3/13/2018
Jaime Serrato			US	3/13/2018
Tienne Mohs			US	3/13/2018
Maggie Brown			US	3/13/2018
ann newman			US	3/13/2018
Kyle Caldwell			US	3/13/2018
Ashley Banks			US	3/13/2018
Esmeralda Espinosa			US	3/13/2018
Gabbana Parker			US	3/13/2018
Matthew Kalinowski			US	3/13/2018
Danielle Lindland			US	3/13/2018
David Fernandes			US	3/13/2018
Elizabeth Hill			US	3/13/2018
Donna Lewis			US	3/13/2018
Nicole McElwain			US	3/13/2018
Margaret Leon	Bolton	MA	US	3/13/2018
Wanda White			US	3/13/2018
Hunter Gray			US	3/13/2018
Janice Iredo			US	3/13/2018
David Nakai			US	3/13/2018
Molly Taylor			US	3/13/2018
Wendy Hatch			US	3/13/2018
Donald Morris			US	3/13/2018
peter bascom	Fort Lauderdale	FL	US	3/13/2018
Solvey Zanardi	Waltham	MA	US	3/13/2018
mary bodwell	cambridge	MA	US	3/13/2018
Alexander Emerson	Belfast	ME	US	3/13/2018
Dennis M Conway	South Boston	MA	US	3/13/2018
Briony Keith	Arlington	MA	US	3/13/2018
Donald Tarallo	Worcester	MA	US	3/13/2018

Preserve Paine Estate Woods Petition

Signatures

March 5, 2018 to April 6, 2018

Joshua Steinberg	Woburn	MA	US	3/13/2018
Sarah Jeanne			US	3/13/2018
Alexandra Robertson	Worcester	MA	US	3/13/2018
Lynne Wiatr	Grosse Pointe	MI	US	3/13/2018
Pat Gardner	Plano	TX	US	3/13/2018
Joan Quigley	Stoneham	MA	US	3/13/2018
sarah freeman	JP	MA	US	3/13/2018
Jill Standlee	San Francisco	CA	US	3/13/2018
Rachel Lev	Brooklyn	NY	US	3/13/2018
Lynn Curry	Madison	AL	US	3/13/2018
Raymond Lucas	Columbia	MD	US	3/13/2018
Deana Tavares	Dedham	MA	US	3/13/2018
Keith Pernell	Quincy	MA	US	3/13/2018
Paula Daigle	New Bedford	MA	US	3/13/2018
Lynne Pernell	Plainville	CT	US	3/13/2018
Suzanne Teesdale Hufford	Crown Point	IN	US	3/13/2018
Margie Freeman	S. Orange	NJ	US	3/13/2018
Charles Newhall	Salem	MA	US	3/13/2018
Cindy Elias	Brookline	MA	US	3/13/2018
Christine Barenfeld	Boxford	MA	US	3/13/2018
Heather Tuttle	Baltimore	MD	US	3/13/2018
sarah merryman	Cadiz	OH	US	3/13/2018
christine farrell-riley	quincy	MA	US	3/13/2018
Clara Lennox, MD	Melrose	MA	US	3/13/2018
Joni Pennington	Lake Ann	MI	US	3/13/2018
Brendan Mackinson	Andover	MA	US	3/13/2018
Kevin O'Neill	Columbia	NJ	US	3/13/2018
Shannon Hageman	archbold	OH	US	3/13/2018
John Schukoske			US	3/13/2018
Kristine Hodlin	Hyde Park	MA	US	3/13/2018
Jennifer Evans	North Reading	MA	US	3/13/2018
Gina Saucedo	Concord	MA	US	3/13/2018
Dan McClendon	Peabody	MA	US	3/13/2018
Luci Cedrone	McLean	VA	US	3/13/2018
Jacob Albert	Cambridge	MA	US	3/13/2018
Nancy Siska	Wellesley	MA	US	3/13/2018
James Frawley	Walpole	MA	US	3/13/2018
elissa rzmd@verizon.net	zo Boston	MA	US	3/13/2018
Ruth Kahn	Auburndale	MA	US	3/13/2018

Preserve Paine Estate Woods Petition

Signatures

March 5, 2018 to April 6, 2018

Robin Grove	New Windsor	NY	US	3/13/2018
Deborah Brochu	Natick	MA	US	3/13/2018
Lauren Nassiff	Medway	MA	US	3/13/2018
Sally strawn	Eastham	MA	US	3/13/2018
Edward Teesdale-Shermar	Mt. Pleasant	MI	US	3/13/2018
Mark Brochu	Natick	MA	US	3/13/2018
Jane Andreyko	Chicago	IL	US	3/13/2018
Sarah Heath	Mattapan	MA	US	3/13/2018
Bethany Taddeo	Waltham	MA	US	3/13/2018
Alice Kelley	Strafford	PA	US	3/13/2018
Gail Fitzgerald	Newtonville	MA	US	3/13/2018
Dane Morrison	Newmarket	NH	US	3/13/2018
Carolyn Decker	Providence	RI	US	3/13/2018
Bonnie Brennan	Chicago	IL	US	3/13/2018
Terrence Teesdale	Hersey	MI	US	3/13/2018
Hans Brings	Waltham	MA	US	3/13/2018
Brian Erickson	Hartford	CT	US	3/13/2018
Evelyn Ullman	Medford	MA	US	3/13/2018
Deb Gold	Arlington	MA	US	3/13/2018
Ellen Sapp	North Reading	MA	US	3/13/2018
Kiera Sapp	Cambridge	MA	US	3/13/2018
Amy Baldwin	Waltham	MA	US	3/13/2018
Susannah Sapp	Villanova	PA	US	3/13/2018
Anastasia Baima	Waltham	MA	US	3/13/2018
Claire Baima	Waltham	MA	US	3/13/2018
Jennifer Parmenter	Newton	MA	US	3/13/2018
Katelyn Samios	Watertown	MA	US	3/13/2018
Ruth Dain	Newton	MA	US	3/13/2018
Andrew Mannino	Waltham	MA	US	3/13/2018
Roger Stacey	Cambridge	MA	US	3/13/2018
Cynthia Miccile	Millis	MA	US	3/13/2018
Yvan Riendeau	Swampscott	MA	US	3/13/2018
Joanne Ferrera	Chesapeake	VA	US	3/13/2018
Elizabeth Ferry	Brookline	MA	US	3/13/2018
Matthew Taddeo	Waltham	MA	US	3/13/2018
deirdre simpkins	Wilmington	MA	US	3/13/2018
Alida Silverman	Atlanta	GA	US	3/13/2018
Cara Ferguson	Waltham	MA	US	3/13/2018
George Sergi	Norton	MA	US	3/13/2018

Preserve Paine Estate Woods Petition

Signatures

March 5, 2018 to April 6, 2018

LiLi Bourne	Waltham	MA	US	3/13/2018
Ariel Must	Secaucus	NJ	US	3/13/2018
Nancy Gold	Cambridge	MA	US	3/13/2018
Alex Pais	houston	TX	US	3/13/2018
Keith Marcotte	Boston	MA	US	3/13/2018
Kathryn LeVan	Waltham	MA	US	3/13/2018
Keith LeVan	Waltham	MA	US	3/13/2018
Susan Marine	Waltham	MA	US	3/13/2018
Denise Annunciata	Framingham	MA	US	3/13/2018
Joanne Cancro	Waltham	MA	US	3/14/2018
Bruce Bolger	Hastings on Hudson	NY	US	3/14/2018
Karen Diehl	Bristol	RI	US	3/14/2018
Steve Masterson	Nomans Land	MA	US	3/14/2018
Karen Williams	Lake Worth	FL	US	3/14/2018
Adam Sapp	Boston	MA	US	3/14/2018
Gene Grin	Boston	MA	US	3/14/2018
Mohamed Aarif	Boston	MA	US	3/14/2018
Joe Sisto	Boston	MA	US	3/14/2018
Karah Gravallesse	Lawrence	MA	US	3/14/2018
Robert Bellinger	Lexington	MA	US	3/14/2018
Michael Corbett	Waltham	MA	US	3/14/2018
Diane Plotts	Waltham	MA	US	3/14/2018
C. Siteman	Jamaica Plain	MA	US	3/14/2018
Elizabeth Brenner	Waltham	MA	US	3/14/2018
Pamela Freeman	Champlin	MN	US	3/14/2018
Eric Dewar	Boston	MA	US	3/14/2018
Brian Freeman	Oak Grove	MN	US	3/14/2018
Lyline Medeiros	Walnut Creek	CA	US	3/14/2018
Stephen Baird	Jamaica Plain	MA	US	3/14/2018
Brendan Carney	Newton	MA	US	3/14/2018
Judith Kellam	Waltham	MA	US	3/14/2018
Martha McNamara	Boston	MA	US	3/14/2018
Heidi Henderson	South Kingstown	RI	US	3/14/2018
Dennis Must	Salem	MA	US	3/14/2018
Linda Squires	Acton		Canada	3/14/2018
D. J. DeWolf	New Bedford	MA	US	3/14/2018
Nancy Robitaille	Natick	MA	US	3/14/2018
Lisa M Austin	Boston	MA	US	3/14/2018
Ellen Bradley	Quincy	MA	US	3/14/2018

Preserve Paine Estate Woods Petition

Signatures

March 5, 2018 to April 6, 2018

Robert Zabicki	Oil City	PA	US	3/14/2018
Jo Madden	Los Angeles	CA	US	3/14/2018
Mary Clifford	Barrington	RI	US	3/14/2018
Mary Ann Partridge			Croatia	3/14/2018
Sarah Ciambrone			US	3/14/2018
david rogers	Brewster	MA	US	3/14/2018
Aviva Must	Woonsocket	MA	US	3/14/2018
Sharon Gates	Burlington	MA	US	3/15/2018
Martha Sanders	Beverly	MA	US	3/15/2018
Kathy Martin	Somerville	MA	US	3/15/2018
Dina Medeiros	Dedham	MA	US	3/15/2018
Judith Paradis	Brookline	MA	US	3/15/2018
marilyn kleis	Mentor	OH	US	3/15/2018
Maria Dewees	East Montpelier	VT	US	3/15/2018
Maria Beatriz Zanotti			US	3/15/2018
Sarah Ernst-Edwards	Waltham	MA	US	3/15/2018
Wendy Dennison	Waltham	MA	US	3/15/2018
Richard Rouse	Roslindale	MA	US	3/15/2018
Andrew Ladygo	Ashland	OR	US	3/15/2018
Antoine Guillon	Boston	MA	US	3/15/2018
William Robitaille	Natick	MA	US	3/15/2018
Colleen Whiteford	Edinburg	VA	US	3/16/2018
Carol McKeen	WALTHAM	MA	US	3/16/2018
Scott Tulay	Amherst	MA	US	3/16/2018
Leslie Tremblay	Danvers	MA	US	3/16/2018
Jim McLean	Arlington	MA	US	3/16/2018
Tana Walsh	Waltham	MA	US	3/16/2018
Virginia Marcotte	Boston	MA	US	3/17/2018
DM L	Chatsworth	CA	US	3/17/2018
Robert Haley	Wal	MA	US	3/17/2018
Kirsi Kilpinen			Finland	3/17/2018
Christine Bishop	Weston	MA	US	3/17/2018
James F. O'Gorman	Portland	ME	US	3/17/2018
Jim Fesler	Waltham	MA	US	3/17/2018
Dnarion Greiet			US	3/17/2018
esteban devega			US	3/17/2018
Jared Williams			US	3/17/2018
Carol Greenfield			US	3/17/2018
Andrew Sellon			US	3/17/2018

Preserve Paine Estate Woods Petition

Signatures

March 5, 2018 to April 6, 2018

jenny Huang			US	3/17/2018
Lily Boren			US	3/17/2018
Riley McCoy			US	3/17/2018
Maria Gutierrez			US	3/17/2018
Stella Bender			US	3/17/2018
bisceglia white			US	3/17/2018
James Acree			US	3/17/2018
Angela Viera			US	3/17/2018
susan Procel			US	3/17/2018
Mark Crawford	Brooklyn	NY	US	3/17/2018
Jamie Werchadlo	Waltham	MA	US	3/17/2018
Deborah Schreiber, Esq	Waltham	MA	US	3/17/2018
George leblanc	Waltham	MA	US	3/17/2018
Ann Vance	Minneapolis	MN	US	3/17/2018
Claude Scales	Brooklyn	NY	US	3/17/2018
Wilma Ronco	Lexington	MA	US	3/17/2018
Jonathan Perez			US	3/17/2018
Juliana Nobody			US	3/17/2018
Jason Cooke			US	3/17/2018
Traci Chuong			US	3/17/2018
Piper Rodebeck			US	3/17/2018
Fido Dondf			US	3/17/2018
Frances Burns			US	3/17/2018
Sue Pullman			US	3/17/2018
Mike M.	New York	NY	US	3/17/2018
Jon Dobrowsky			US	3/17/2018
Christina McDowell			US	3/17/2018
Rebecca Dorfman			US	3/17/2018
Dariel Tolentino			US	3/17/2018
Karen Kilbane			US	3/17/2018
Victoria Campbell			US	3/17/2018
Ilse DePriest			US	3/17/2018
SARA KNAB			US	3/17/2018
Marcia Likar			US	3/17/2018
Autumn Mongkhaltham			US	3/17/2018
Elsa Camargo			US	3/17/2018
Lucas Pace			US	3/17/2018
Elizabeth Muriel			US	3/17/2018
Erin Foley			US	3/17/2018

Preserve Paine Estate Woods Petition

Signatures

March 5, 2018 to April 6, 2018

Thomas Masterson			US	3/17/2018
Hannah Lee			US	3/17/2018
lisa donahoe			US	3/17/2018
Marlene Martinez Castro			US	3/17/2018
cody davis davis			US	3/17/2018
Julia Hagwood			US	3/17/2018
Jamie Meyers			US	3/17/2018
ivana henderson			US	3/17/2018
Levi Vargas			US	3/17/2018
Patricia Winks			US	3/17/2018
Kenan Bess			US	3/17/2018
Laurie Dufresne			US	3/17/2018
Robin Notti			US	3/17/2018
Brittany Dawson			US	3/17/2018
Denise Parsick			US	3/17/2018
Rebecca Cole			US	3/17/2018
Linda Dacey	Waltham	MA	US	3/17/2018
Monika Floyd	Kleinmachnow		Germany	3/17/2018
Emily J Horcher	Brooklyn	NY	US	3/17/2018
Marianne Cameron	Weston	CT	US	3/17/2018
Thomas Crook	Natick	MA	US	3/17/2018
Walter Leutz	Waltham	MA	US	3/17/2018
Todd Mace	Clifton Park	NY	US	3/17/2018
Rebecca Haley	Waltham	MA	US	3/17/2018
Andrew Adamopoulos	Boston	MA	US	3/17/2018
Michael Crook	San Antonio	TX	US	3/17/2018
Justin Barre	Oxford	CT	US	3/17/2018
Helene Eisenberg	New York	NY	US	3/17/2018
Beth Monje			US	3/17/2018
George Steeves			US	3/17/2018
Owynn Cook			US	3/17/2018
Evan Goler			US	3/17/2018
Heidi M			US	3/17/2018
Denise Brown			US	3/17/2018
Tina Babcock			US	3/17/2018
Xochilt Guadarrama			US	3/17/2018
Blaine Nowak			US	3/17/2018
Michaela Blea			US	3/17/2018
Thomas Haskell			US	3/17/2018

Preserve Paine Estate Woods Petition

Signatures

March 5, 2018 to April 6, 2018

Anna Chen			US	3/17/2018
Ralph/Terry Marston			US	3/17/2018
Lucas Diaz			US	3/17/2018
Kaye William			US	3/17/2018
Johanne Fievre			US	3/17/2018
Doreen Esquer			US	3/17/2018
Georgie Villegas			US	3/17/2018
Joshua Naciel			US	3/17/2018
Theodora Sullivan			US	3/17/2018
Christopher Hilley			US	3/17/2018
Terri Grubb			US	3/17/2018
Sandra Spring	Waltham	MA	US	3/17/2018
Mona McGean	Waltham	MA	US	3/18/2018
Courtney Forrester	Watertown	MA	US	3/18/2018
William Glavin	Berkley	MA	US	3/18/2018
Marilyn O'Neill	Delmar	NY	US	3/18/2018
Bill McDowell			US	3/18/2018
Ruth Lyddy	Waltham	MA	US	3/18/2018
Sarah Netsky	Cambridge	MA	US	3/18/2018
Julie Ann Gillis	New York	NY	US	3/18/2018
Gail Drakos	Waltham	MA	US	3/18/2018
Dave Russo	Framingham	MA	US	3/18/2018
Rita Adams	Natick	MA	US	3/18/2018
Josh Bolduc			US	3/18/2018
Polka Pup			US	3/18/2018
Matthew Elias			US	3/18/2018
Scott McNeal			US	3/18/2018
Chelci Patterson			US	3/18/2018
Melissa Zhang			US	3/18/2018
Arnaud Naintre			US	3/18/2018
Jessica Jimenez			US	3/18/2018
Eduardo Barrientos			US	3/18/2018
JOseph Jaros			US	3/18/2018
Linda Clair			US	3/18/2018
Adam Muth			US	3/18/2018
Jesse Munoz			US	3/18/2018
Danielle Pompeii			US	3/18/2018
Ishan Chavan			US	3/18/2018
Stephen Smith			US	3/18/2018

Preserve Paine Estate Woods Petition

Signatures

March 5, 2018 to April 6, 2018

Vince REINDL			US	3/18/2018
Kac Mum			US	3/18/2018
Amy Hiley			US	3/18/2018
Lori Beliveau			US	3/18/2018
Heather Smith-Watson			US	3/18/2018
emily rogalski			US	3/18/2018
Chris Scholl	Neptune	NJ	US	3/18/2018
Walter Jeffery			US	3/18/2018
Michael Reed			US	3/18/2018
Andre Pujic			US	3/18/2018
William Six			US	3/18/2018
Bailey Ellis			US	3/18/2018
Philippe Medor			US	3/18/2018
Kimberly Marcum			US	3/18/2018
julie ayres			US	3/18/2018
Robert Costlow			US	3/18/2018
Luke McDowell			US	3/18/2018
Monique Bridges			US	3/18/2018
Angela Shaffer			US	3/18/2018
Lisa Kelleher	Natick	MA	US	3/18/2018
Daniel McGean	Malden	MA	US	3/18/2018
Stefano Andrew Lembo	Rome		Italy	3/18/2018
Colin Carver			US	3/18/2018
Nate Buchanan			US	3/18/2018
Jennifer Cathers			US	3/18/2018
Joany Montanez			US	3/18/2018
Beth Schillo			US	3/18/2018
Elizabeth Hernandez			US	3/18/2018
Esther Fox-Dabrowski			US	3/18/2018
Teresa Pardella			US	3/18/2018
Nick Kluger			US	3/18/2018
Kailey Ray			US	3/18/2018
krysta keller			US	3/18/2018
Ashley Occean			US	3/18/2018
Helena Keanum			US	3/18/2018
Joan Wilce			US	3/18/2018
Denise Proch			US	3/18/2018
Chandana Nandi			US	3/18/2018
Rory McKeough			US	3/18/2018

Preserve Paine Estate Woods Petition

Signatures

March 5, 2018 to April 6, 2018

MICHELLE IANTORNO			US	3/18/2018
Carol Alimenti	Waltham	MA	US	3/18/2018
John Dacey	Waltham	MA	US	3/18/2018
Susan McElhaney	Yorba Linda	CA	US	3/18/2018
Peter Clifford	Barrington	RI	US	3/18/2018
James Wheelwright	Cambridge	MA	US	3/18/2018
Emily OKeefe	Waltham	MA	US	3/18/2018
Linda Christlieb	Cambridge	MA	US	3/18/2018
Kathleen Johnson	Waltham	MA	US	3/18/2018
Kristen Butts	Westport	CT	US	3/18/2018
Heidi Smith Pento	South Easton	MA	US	3/18/2018
Bianca Morsello			US	3/18/2018
Josh Atchison			US	3/18/2018
Pellegrino DeGuglielmo	Watertown	MA	US	3/18/2018
Emily Anspach	Solomons	MD	US	3/18/2018
josh pootis			US	3/18/2018
Nancy Kuhl			US	3/18/2018
Madalina Gheorghita			US	3/18/2018
Monica Garcia			US	3/18/2018
melinda nino			US	3/18/2018
Jessica Girardin			US	3/18/2018
Lorrie Copeland			US	3/18/2018
Fukuko Harris			US	3/18/2018
Robert Rivicci			US	3/18/2018
joshua rose			US	3/18/2018
Juliet Jacobs			US	3/18/2018
Kristy Walker			US	3/18/2018
Jillian Storms			US	3/18/2018
karl marvin			US	3/18/2018
Kimberly Smith			US	3/18/2018
Kayla O'Brien			US	3/18/2018
Zachary Vasquez			US	3/18/2018
Mercedes Hernandez-Natera			US	3/18/2018
Eli Young			US	3/18/2018
Tessa Bond			US	3/18/2018
Simone Valentine			US	3/18/2018
Kelly Melgoza			US	3/18/2018
Gisele Ayora			US	3/18/2018
bob zabor			US	3/18/2018

Preserve Paine Estate Woods Petition

Signatures

March 5, 2018 to April 6, 2018

Angelina Solorio			US	3/18/2018
Alexandra Seda			US	3/18/2018
Chelsea Cruz			US	3/18/2018
Gayle Holten			US	3/18/2018
Julia Ramoy			US	3/18/2018
Lacey Puskaric			US	3/18/2018
Ann Campobasso	Waltham	MA	US	3/18/2018
Donna Murphy	Rehoboth	MA	US	3/19/2018
Paul Leonard	Las Vegas	NV	US	3/19/2018
Clare Connolly Welch	Waltham	MA	US	3/19/2018
Andrea Lamb	Burlington	MA	US	3/19/2018
Sharon Truesdale	Waltham	MA	US	3/19/2018
Melyssa Atwood	Lincoln	MA	US	3/19/2018
Kristie Medina	Sherborn	MA	US	3/19/2018
Scott Sawin	Westford	MA	US	3/19/2018
Barbara Alarie	Waltham	MA	US	3/19/2018
Thelma Sosa Wallett	Sudbury	MA	US	3/19/2018
Walter Parker	Sudbury	MA	US	3/19/2018
Lisa Derrick	Goleta	CA	US	3/19/2018
Daniel DePompei	Saugus	MA	US	3/19/2018
Judith Harris	Sudbury	MA	US	3/19/2018
Rich Magazu	Sudbury	MA	US	3/19/2018
Dorothy Bisson	Sudbury	MA	US	3/19/2018
Jane Luckner	Concord	MA	US	3/19/2018
Siobhan Hullinger	Carlisle	MA	US	3/19/2018
Lisa Deneault	Watertown	MA	US	3/19/2018
Dennis Kaplan	Mayfield Heights	OH	US	3/19/2018
Wendy Hewitt	Hudson	MA	US	3/19/2018
Andrea Carr-Evans	Framingham	MA	US	3/19/2018
Tamara Lempiainen	Corona	CA	US	3/19/2018
Joanne Minassian	Sudbury	MA	US	3/19/2018
Lorraine Maguire	Sudbury	MA	US	3/19/2018
Jimmy Kalogeropoulos	Westford	MA	US	3/19/2018
Barbara ryan	Sudbury	MA	US	3/19/2018
Mary Leen	Charlestown	MA	US	3/19/2018
Lisa Erickson Gorman	Waltham	MA	US	3/19/2018
Raymond Phillips	Sudbury	MA	US	3/19/2018
Emmaline McCourt	New York	NY	US	3/19/2018
Joseph dolliver	leonardtwn	MD	US	3/19/2018

Preserve Paine Estate Woods Petition

Signatures

March 5, 2018 to April 6, 2018

Martha Tomanelli	Londonderry	NH	US	3/19/2018
maria shorb	Waynesville	GA	US	3/19/2018
Lois Mason	Lexington	MA	US	3/19/2018
Patricia Fletcher	Belmont	MA	US	3/19/2018
Tanya Zieman	Waltham	MA	US	3/19/2018
Sandra Kendall	Boston	MA	US	3/19/2018
Regina Thompson	El Cerrito	CA	US	3/19/2018
Caroline Diamond	Sudbury	MA	US	3/19/2018
Deb Guttormsen	Waltham	MA	US	3/19/2018
Jack Cox	Boston	MA	US	3/20/2018
Luellen Best	Newton Center	MA	US	3/20/2018
Alex Horne	Littleton	MA	US	3/20/2018
Samantha Horne	Littleton	MA	US	3/20/2018
m Silverman	Marlborough	MA	US	3/20/2018
Brianna Cabrera			US	3/20/2018
Isabel Skye			US	3/20/2018
Neil Tipton			US	3/20/2018
Patrice Wallace	Santa Cruz	CA	US	3/20/2018
Stephanie Austin			US	3/20/2018
Sefath Khan			US	3/20/2018
Marilyn Rios			US	3/20/2018
Monica Lomas	Oakland	CA	US	3/20/2018
josh ruark			US	3/20/2018
Evan Warrender			US	3/20/2018
Denise Pistana			US	3/20/2018
Stephanie LaFleur	Bryans Road	MD	US	3/20/2018
Tasha nicole			US	3/20/2018
Jacob Halverson			US	3/20/2018
Tatyanna Daniels			US	3/20/2018
Dianne Douglas			US	3/20/2018
Rosie v Rivera			US	3/20/2018
Sandra mercier	Port Orchard	WA	US	3/20/2018
Joel Symons			US	3/20/2018
marjorie reedy			US	3/20/2018
Vicki Gomez	San Leandro	CA	US	3/20/2018
Thomas Greifzu			US	3/20/2018
Sheila Frizzell			US	3/20/2018
terri allums			US	3/20/2018
zia welch			US	3/20/2018

Preserve Paine Estate Woods Petition

Signatures

March 5, 2018 to April 6, 2018

Elaine Fischer	Roanoke	VA	US	3/20/2018
Joe Drobinski	Brisbane		Australia	3/20/2018
Susan Lyon	Newton	MA	US	3/20/2018
Shauntee Corbett	Marlborough	MA	US	3/20/2018
Andrew McDowell	Holliston	MA	US	3/20/2018
Damon Michaels	Marlborough	MA	US	3/20/2018
Lissa Walsh	Bismarck	ND	US	3/21/2018
Cara Jones	San Francisco	CA	US	3/21/2018
Isabelle Montesi	Arlington	MA	US	3/21/2018
Mary Leger	Waltham	MA	US	3/21/2018
Marva Craig	Natick	MA	US	3/21/2018
Kerrie Clark	Belmont	MA	US	3/21/2018
Teri Dugan Frost	Concord	MA	US	3/21/2018
rachel dolmatch	Quincy	MA	US	3/21/2018
Max Brodsky	Waltham	MA	US	3/21/2018
Joseph Niedbala	Waltham	MA	US	3/21/2018
Robert Perry	Waltham	MA	US	3/21/2018
FRANCIS KOWSKY	Buffalo	NY	US	3/21/2018
Geoffrey Stanton	Waltham	MA	US	3/21/2018
Leo Mayer	Waltham	MA	US	3/21/2018
Tania Shifrin	Waltham	MA	US	3/21/2018
Chad Shaw			US	3/21/2018
Michelle Rettig			US	3/21/2018
Vaishnavi Varanasy			US	3/21/2018
Zachary Rich			US	3/21/2018
Evan Buckley			US	3/21/2018
Simone Lindsay			US	3/21/2018
Daniela Vega			US	3/21/2018
Diana Renteria			US	3/21/2018
Ann Takahashi			US	3/21/2018
eduardo silva			US	3/21/2018
Nicole Palmer			US	3/21/2018
Jeremy Burkett	Yucaipa	MA	US	3/22/2018
Grigory Ruvinsky	Waltham	MA	US	3/22/2018
Arun Korrapati			US	3/22/2018
Marce Walsh	Houston	TX	US	3/22/2018
Alex Goldberg			US	3/22/2018
Keith Adams	Brooklyn	NY	US	3/22/2018
Lucy Elfert			US	3/22/2018

Preserve Paine Estate Woods Petition

Signatures

March 5, 2018 to April 6, 2018

Crystal Pate			US	3/22/2018
Sonia Gutt			US	3/22/2018
Stefani McCullough			US	3/22/2018
Elizabeth Ann			US	3/22/2018
Michele Doucette			US	3/22/2018
Bryanna Ryan			US	3/22/2018
Sharon Willis			US	3/22/2018
Kandy Baird			US	3/22/2018
Renee Umlah	revere	MA	US	3/22/2018
Andrea Franz	Charlestown	MA	US	3/22/2018
Miller Longbotham	Marblehead	MA	US	3/22/2018
Amy Short	Waltham	MA	US	3/22/2018
Isabella Jancourtz	Weston	MA	US	3/22/2018
Stephanie Hooper	marlborough	MA	US	3/22/2018
Amy Rothman	Waltham	MA	US	3/22/2018
anne curtis	lamoine	ME	US	3/22/2018
Candace Young	Cambridge	MA	US	3/22/2018
Daniel Langenthal	Cambridge	MA	US	3/22/2018
Lorraine Pennell	Worcester	MA	US	3/22/2018
Marcia Goodwin	Waltham	MA	US	3/22/2018
Jean Goodwin	Waltham	MA	US	3/22/2018
Livia Woodsum	Newmarket	NH	US	3/22/2018
Kathryn Muir	Oakland	CA	US	3/22/2018
Teri Condon	Arlington	MA	US	3/22/2018
Karen Heffernan	Needham Heights	MA	US	3/22/2018
George Vakalopoulos	Concord	MA	US	3/22/2018
Sonja Wadman	Waltham	MA	US	3/22/2018
Margaret Biondo	Secaucus	NJ	US	3/22/2018
Kathleen McGrath	Concord	MA	US	3/23/2018
Marc Rudnick	Waltham	MA	US	3/23/2018
Darcy brandt	Waltham	MA	US	3/23/2018
Diana Mo	Framingham	MA	US	3/24/2018
Joanne Chartier	Waltham	MA	US	3/24/2018
RUTH HOPKINSON	Waltham	MA	US	3/24/2018
Aeri Yoon			US	3/24/2018
Emma De Lorenzo			US	3/24/2018
Ferolin Joseph Plathottam			US	3/24/2018
Brenda Cervantes			US	3/24/2018
Christy Mueller			US	3/24/2018

Preserve Paine Estate Woods Petition

Signatures

March 5, 2018 to April 6, 2018

Natasha Correa			US	3/24/2018
Sara Gott			US	3/24/2018
Sarah Menchu	West Newton	MA	US	3/25/2018
Jean Stringham	Auburndale	MA	US	3/25/2018
Roy Schwartz	Secaucus	NJ	US	3/25/2018
Charles Dunne	Prides Crossing	MA	US	3/26/2018
Deb Woods-Murphy			US	3/26/2018
Polly Ginnis			US	3/26/2018
Larry Cohen			US	3/26/2018
Laura Britton			US	3/26/2018
Nessa Amherst			US	3/26/2018
Trapper Sturgeon			US	3/26/2018
Chris Mernin			US	3/26/2018
Andrea Hill			US	3/26/2018
Karla Cuevas	Houston	TX	US	3/26/2018
Christina Fermin			US	3/26/2018
Christina Plummer			US	3/26/2018
Miriam Vigoa			US	3/26/2018
Duane Lewin			US	3/26/2018
julia frengul			US	3/26/2018
RANDOLPH WILLIAMS Williams			US	3/26/2018
Christine Mihalick			US	3/26/2018
John Jones	Montgomery	AL	US	3/26/2018
Tabitha Duerr			US	3/26/2018
Carolina Larracilla			US	3/26/2018
Mike DeNicolis			US	3/26/2018
Denise Mantell			US	3/26/2018
Erin Meacham			US	3/26/2018
Wiena Soebiakto			US	3/26/2018
John Litts			US	3/26/2018
Ronald Radden			US	3/26/2018
Terry Nickel			US	3/26/2018
Korey Ingersoll			US	3/26/2018
Karsten Magee			US	3/26/2018
Frania Blandon			US	3/26/2018
Jaimie Park	Simpsonville	SC	US	3/26/2018
Julia Pascoe	Simpsonville	SC	US	3/26/2018
Ellie Bryant	Simpsonville	SC	US	3/26/2018
joanne lau	Watertown	MA	US	3/26/2018

Preserve Paine Estate Woods Petition

Signatures

March 5, 2018 to April 6, 2018

Robert Richardson	Brookline	MA	US	3/26/2018
Carol Goerke	Tempe	AZ	US	3/26/2018
Richard Barker	Tempe	OR	US	3/26/2018
Sandi Aden	Lincoln	NE	US	3/26/2018
Dianne Douglas	Phoenix	AZ	US	3/26/2018
Micah McCarthy	Smithfield	RI	US	3/26/2018
Suzanne Hildreth	Waltham	MA	US	3/26/2018
Lynn Harvey	Chicago	IL	US	3/26/2018
Louise Najarian	Waltham	MA	US	3/26/2018
Valerie Dovel	Brookline	MA	US	3/26/2018
Yannick Kasongo			US	3/26/2018
Nicole Garner			US	3/26/2018
Michel Soltani	Boston	MA	US	3/26/2018
Donna Higgins			US	3/26/2018
Daniel Gallant	Cambridge	MA	US	3/26/2018
Rachel Sanders	Waltham	MA	US	3/27/2018
Eamonn Doyne	Braintree	MA	US	3/27/2018
matt park	Brighton	MA	US	3/27/2018
Shari Mega	Waltham	MA	US	3/27/2018
Stephen Siteman	Quincy	MA	US	3/27/2018
Janae Taylor	Allston	MA	US	3/27/2018
Jean Svizzero	Brookline	MA	US	3/27/2018
Rev. Janet Weber	Nanuet	NY	US	3/27/2018
Jeremy Lehane	Canton	MA	US	3/27/2018
Emilija Baksys	Quincy	MA	US	3/27/2018
Whit Rutherford	Lyndonville	VT	US	3/27/2018
Zachary Bos	Boston	MA	US	3/27/2018
Stephanie Davis	Acton	MA	US	3/27/2018
Benjamin Olson	Brookline	MA	US	3/27/2018
laura knosp	arlington	MA	US	3/27/2018
Alan Aukeman	Cambridge	MA	US	3/27/2018
Amy Murphy	Wellesley	MA	US	3/27/2018
Stuart Weinreb	Acton	MA	US	3/27/2018
Thomas Mishler	San Diego	CA	US	3/27/2018
Laurie Jennings	Washington	DC	US	3/27/2018
Justin Staunton			US	3/27/2018
Karen Pecsok			US	3/27/2018
Reshma Ramoutar			US	3/27/2018
Fabi M			US	3/27/2018

Preserve Paine Estate Woods Petition

Signatures

March 5, 2018 to April 6, 2018

Sherry Gerszberg			US	3/27/2018
Cleary Rose			US	3/27/2018
Azaria Nikali			US	3/27/2018
Lily Fris			US	3/27/2018
Jasia Sarich			US	3/27/2018
Matt Heidloff	Grand Rapids	MI	US	3/27/2018
Benjamin George	Logan	UT	US	3/27/2018
Jadwiga Glowacki			US	3/27/2018
Rana Boland	New York	NY	US	3/27/2018
Reza Dehdari			US	3/27/2018
jean barton			US	3/27/2018
Janna Strand			US	3/27/2018
Eric Doll	Des Moines	IA	US	3/27/2018
Johanna James-Heinz	Mansfield	IL	US	3/27/2018
Nancy Buley	Hubbard	OR	US	3/27/2018
Jennifer Loa	Austin		US	3/27/2018
Thomas Ryan	Waltham	MA	US	3/27/2018
Julie Davis	Dover	MA	US	3/27/2018
Steve McMurchie	San Jose	CA	US	3/27/2018
Richard Pazzano	Waltham	MA	US	3/27/2018
Kacey Doll	Des Moines	IA	US	3/27/2018
Karen Jessup	Providence	RI	US	3/27/2018
Steve Dunlap	Watertown	MA	US	3/27/2018
Jeff Freeman	Butler	NJ	US	3/27/2018
Allison Crosbie	Cambridge	MA	US	3/27/2018
paula panich	Albuquerque	NM	US	3/27/2018
Kevin Bryan Shea	Waltham	MA	US	3/27/2018
Jacqueline Lansing	Denver	CO	US	3/27/2018
Brad Greenbury	Fresno	CA	US	3/27/2018
Chris Vasquez	Omaha	NE	US	3/27/2018
Jessica Pace			US	3/27/2018
Claire Alexander	San Antonio	TX	US	3/27/2018
April Austin	Lexington	MA	US	3/27/2018
Owen Hyde			US	3/27/2018
W Dean Balmer			US	3/27/2018
Vinita Sidhu	Seattle	WA	US	3/27/2018
Judith Heintz	Brooklyn	NY	US	3/27/2018
Josh Perlin	Waltham	MA	US	3/27/2018
JOANNE 'DONNELL	Philadelphia	PA	US	3/27/2018

Preserve Paine Estate Woods Petition

Signatures

March 5, 2018 to April 6, 2018

Julie Kahn	Watertown	MA	US	3/27/2018
Cyril Khazan	woodmere	NY	US	3/27/2018
Judy Weinberg	Arlington	MA	US	3/27/2018
neil perlin	Foxboro	MA	US	3/27/2018
john tauscher	Washington	DC	US	3/27/2018
Inna Ryvkin	Waltham	MA	US	3/27/2018
Traci McGee			US	3/27/2018
Patrick Jennings	Waltham	MA	US	3/27/2018
Asron Hickey			US	3/27/2018
Peg Breen	New York	NY	US	3/27/2018
Sandra Pearson	Rolling Meadows	IL	US	3/27/2018
Dolores Schueler	Arlington	MA	US	3/27/2018
Emily Moore	Stoughton	WI	US	3/27/2018
Margarita Cañas			US	3/27/2018
Lydia Guzman-De La Fuer	San Antonio	TX	US	3/27/2018
Cristobal Paez			US	3/27/2018
Arvind Balasundaram			US	3/27/2018
Allison Pace			US	3/27/2018
Joe Jurewicz	Gillette	WY	US	3/27/2018
Lady Caicedo			US	3/27/2018
Jo Anad			US	3/27/2018
Michelle Williams			US	3/27/2018
Vinny Maio			US	3/27/2018
Ret Sgt. Angel M. Santiago			US	3/27/2018
Martha Hunt	Albany	IN	US	3/27/2018
Nicholas Watkins	Boston	MA	US	3/27/2018
Ruth Miller	West Hartford	CT	US	3/27/2018
Amy Rothstein	Waltham	MA	US	3/28/2018
alexandra perlin	Wheaton	IL	US	3/28/2018
Scott Fredrickson	Plymouth	MA	US	3/28/2018
DL Drake	New York	NY	US	3/28/2018
Elissa Dunlap	West Roxbury	MA	US	3/28/2018
Jennifer Soucy	Riverdale	MD	US	3/28/2018
evelyn timberlake	Trenton	NJ	US	3/28/2018
Donnamarie Castellano	Ocala	FL	US	3/28/2018
Ashley Rohrs	Brighton	MI	US	3/28/2018
Beatrice Zampitella	Waltham	MA	US	3/28/2018
Tamara Taylor	Cambridge	MA	US	3/28/2018
christine werkhoven	bronx	NY	US	3/28/2018

Preserve Paine Estate Woods Petition

Signatures

March 5, 2018 to April 6, 2018

Penelope Watson	Greenwich	NJ	US	3/28/2018
Liza Castellano	kingston	MA	US	3/28/2018
William Pineo	Raymond	NH	US	3/28/2018
Orlando Medeiros	Waltham	MA	US	3/28/2018
Dorothy Tamashausky	Oxford	NJ	US	3/28/2018
Alex Pisha	New Haven	CT	US	3/28/2018
Ezio Massarotti	waltham	MA	US	3/28/2018
David Carlson	Jackson Heights	NY	US	3/28/2018
Michele Rudnick	Chicago	IL	US	3/28/2018
David Foxe	Wayland	MA	US	3/28/2018
Susan Parrella	Waltham	MA	US	3/29/2018
Cheryl Evans	Woodstock	GA	US	3/29/2018
Karen Schwartz	Watertown	MA	US	3/29/2018
Charlotte Germane	Silver Spring	MD	US	3/29/2018
Anthony Massarotti	Waltham	MA	US	3/29/2018
Stephen Goodwin	Waltham	MA	US	3/29/2018
Michelle Hughes	Cambridge	MA	US	3/29/2018
Pamela Hart	Cambridge	MA	US	3/29/2018
Heidi Hohmann	Ames	IA	US	3/29/2018
McKenzie Wilhelm	Cambridge	MA	US	3/29/2018
Elizabeth Carpenter	Bedford	TX	US	3/29/2018
sue schmidt	denville	NJ	US	3/29/2018
Betsy Shure Gross	Brookline	MA	US	3/29/2018
Sandra Donahue	Portland	ME	US	3/29/2018
Colleen Hanlon-Smith	Belfast	ME	US	3/29/2018
Luke Donahue	Belfast	ME	US	3/30/2018
Marea Santos	Needham	MA	US	3/30/2018
Donna Corcoran	Scituate	MA	US	3/30/2018
laurie swenningsen	escondido	CA	US	3/30/2018
Faith Calhoun	Worcester	MA	US	3/30/2018
nan boucher	Portland	ME	US	3/30/2018
nancy leone	Vernon Rockville	CT	US	3/30/2018
Tom Ahern	Charlestown	MA	US	3/30/2018
Joyce Ananian	Waltham	MA	US	3/30/2018
Lauren Murphy	waltham	MA	US	3/30/2018
Kevin Currie	Waltham	MA	US	3/30/2018
Catherine Oranchak	Arlington	MA	US	3/30/2018
Sandra Hutchinson	Reading	MA	US	3/30/2018
Jonathan Jackson	Waltham	MA	US	3/30/2018

Preserve Paine Estate Woods Petition

Signatures

March 5, 2018 to April 6, 2018

David Mullahy	Bronxville	NY	US	3/30/2018
Frederick Waterman	Scituate	MA	US	3/31/2018
Patrick Wardlaw			US	3/31/2018
Zuleyha Tasci	Drexel Hill	PA	US	3/31/2018
Vera Nova			US	3/31/2018
Clare DeLaura			US	3/31/2018
Kiara Finlinson			US	3/31/2018
Rick Sutphin	Wellesley Hills	MA	US	3/31/2018
Bridgida Kennelly	Perris	CA	US	3/31/2018
Mark Shovan	Peterborough	NH	US	3/31/2018
Molly Stout	Secaucus	NJ	US	3/31/2018
Jami Weber	Arlington	MA	US	3/31/2018
Eric Bacon	Washington	DC	US	3/31/2018
Jim Notman	Brookline	MA	US	3/31/2018
Edward White	Brighton	MA	US	3/31/2018
Michael Leon	New York	MA	US	3/31/2018
Sophie Dano	Boone	NC	US	3/31/2018
Phoebe kantrow	BATON ROUGE	LA	US	3/31/2018
Preston Grandin	Charleston	SC	US	3/31/2018
Fred Fall			US	3/31/2018
Carol Byrd-Brown			US	3/31/2018
Morgan Pfaff	Willis		US	3/31/2018
Eli Osmer			US	3/31/2018
Jeanette Pizano			US	3/31/2018
Iyke Kenna			US	3/31/2018
Arlene Zuckerman			US	3/31/2018
Cat Lew			US	3/31/2018
Austin Baranska			US	3/31/2018
Elizabeth Ahern	Newton Highlands	MA	US	3/31/2018
Kathryn Horning			US	3/31/2018
Harry Storer	Boston	MA	US	3/31/2018
Elizabeth Barnet	Waltham	MA	US	3/31/2018
Rebecca Shovan	Peterborough	NH	US	4/1/2018
Denise Fitch	Washington Depot	CT	US	4/1/2018
Jonathan Heppner	Medford	MA	US	4/1/2018
Stacey Govito	Beaufort	SC	US	4/1/2018
Anthony Cocuzzo	Watertown	MA	US	4/1/2018
Suleina forest	Smyrna	TN	US	4/1/2018
shondra Bingaman			US	4/1/2018

Preserve Paine Estate Woods Petition

Signatures

March 5, 2018 to April 6, 2018

Rebecca Parr			US	4/1/2018
Daniel Walton			US	4/1/2018
Susan Cocuzzo	Waltham	MA	US	4/1/2018
Manoj Kumar Munjeti			US	4/1/2018
Liz Lawrence	Arlington	MA	US	4/1/2018
Diane Day	Waltham	MA	US	4/2/2018
June Kinoshita	Waltham	MA	US	4/2/2018
Rocco Pace	Cape May	NJ	US	4/2/2018
Elizabeth Jache	Lemon Grove	CA	US	4/2/2018
Marina Popov			US	4/2/2018
Holly Leon	Sudbury	MA	US	4/2/2018
sandra white	waltham	MA	US	4/2/2018
Jeff Mills	Maynard	MA	US	4/2/2018
Danielle Desielts	Weymouth	MA	US	4/2/2018
Juana Laynes			US	4/2/2018
Chakri Maya			US	4/2/2018
Rachel Truelove			US	4/2/2018
Barbara Quagliano	Joliet	IL	US	4/2/2018
Martin Linda Martin			US	4/2/2018
Donna McPhie	Waltham	MA	US	4/2/2018
Jennifer White	Belmont	MA	US	4/3/2018
Tod Machover	Waltham	MA	US	4/3/2018
Patricia Taige	Waltham	MA	US	4/3/2018
Lucy Soulliere	Alexandria	VA	US	4/3/2018
Michelle McLachlan			US	4/3/2018
Karen Deckel			US	4/3/2018
Krin Asselta			US	4/3/2018
Sean Monteforte			US	4/3/2018
Barbara Johns	Lewisberry	PA	US	4/3/2018
Rusty Barton			US	4/3/2018
Kian Hagan			US	4/3/2018
Mickey Stocks			US	4/3/2018
Jennifer Cortes			US	4/3/2018
Victoria Pacheco	San Antonio	TX	US	4/3/2018
Sharon DeMedeiros	New Bedford	MA	US	4/3/2018
Gary Cormier	Concord	MA	US	4/3/2018
Cynthia Forbes	Somerville	MA	US	4/3/2018
Karen Delorey	Newton	MA	US	4/3/2018
Sandra Bedrosian	Watertown	MA	US	4/3/2018

Preserve Paine Estate Woods Petition

Signatures

March 5, 2018 to April 6, 2018

Martina Jones	Converse	TX	US	4/4/2018
Barbara Gilbert	Monsey	NY	US	4/4/2018
Michael Cooper			US	4/4/2018
N A			US	4/4/2018
irina kulida	las vegas	NV	US	4/4/2018
Beth Leeson			US	4/4/2018
Heather Wren			US	4/4/2018
Alex Miller			US	4/4/2018
KELLY M. BRYANT			US	4/4/2018
Brandon Meek			US	4/4/2018
Margaret Ultich			US	4/4/2018
Cynthia Alvarado			US	4/4/2018
Miriam M			US	4/4/2018
Gissell Morfin			US	4/4/2018
David Newton			US	4/4/2018
Ruth Massingill			US	4/4/2018
terese Faldet			US	4/4/2018
Stephanie Liberto			US	4/4/2018
Amanda Elliott			US	4/4/2018
Veronica Marek			US	4/4/2018
Robert Akelian			US	4/4/2018
Tammy Miller			US	4/4/2018
Anselma Jimenez			US	4/4/2018
Jeff Witters			US	4/4/2018
Sarah DeBruycker			US	4/4/2018
Edward Benner	Watertown	MA	US	4/4/2018
Bob Fields	Orwell	VT	US	4/4/2018
Joe Barrett	Norwood	MA	US	4/5/2018
Georgina Leyva Juarez			US	4/5/2018
Ari Jeng			US	4/5/2018
sabrina carll			US	4/5/2018
Kasey Groves			US	4/5/2018
Carmen Hoschka			US	4/5/2018
Maria Renteria			US	4/5/2018
Amelia Casados			US	4/5/2018
Sarah Hopson			US	4/5/2018
Anita McMurtrey	Hanford	CA	US	4/5/2018
Nicole Urell	Waltham	MA	US	4/5/2018
Rosanne McNamara	Somerville	MA	US	4/5/2018

Preserve Paine Estate Woods Petition

Signatures

March 5, 2018 to April 6, 2018

Sheny Sarno	Somerville	MA	US	4/5/2018
Mitchell Tutein	Lynn	MA	US	4/5/2018
Don Cuff	Amesbury	MA	US	4/5/2018
Joanne Smith	New York	NY	US	4/5/2018
Janine Shea	Watertown	MA	US	4/5/2018
Denise Walsh	Oak Bluffs	MA	US	4/5/2018
Elisa La Bruna			US	4/5/2018
Gordon Rowley			US	4/5/2018
Karen Marks	Somerville	MA	US	4/5/2018
Joe McNamara	Northbridge	MA	US	4/5/2018
Heather McNamara	Shrewsbury	MA	US	4/5/2018
Elizabeth Sturges	Waltham	MA	US	4/5/2018
Alex Cuff	Cambridge	MA	US	4/5/2018
Dorene Serrao	Melrose	MA	US	4/5/2018
Carolann Leibovitz	Andover	MA	US	4/5/2018
maureen kirk	Wilbraham	MA	US	4/6/2018
Lori Pino	Somerville	MA	US	4/6/2018
Adam Goulet	Waltham	MA	US	4/6/2018
Nelson Barnett	Arlington	MA	US	4/6/2018
Isaiah Milgroom	Newton	MA	US	4/6/2018
Susan Lee	Waltham	MA	US	4/6/2018
Sara Hallor	Belmont	MA	US	4/6/2018